

Measurements for Toilet and Urinal Pathaelasagiri										
.N	Name Of Meterials	L	B	D	TOT	Qty	Tot Qty	Unit	Rate	Amount
1	Earthwork Excavation for footing	1.5	1.5	1.5	3.375	6	20.25	Cum		
2	Footing PCC 1:4:8	1.15	1.15	0.1	0.132	6	0.794	Cum		
	Footing RCC 1:1.5:3	1	1	0.3	0.3	6	1.8	Cum		
	Reinforcement for footing 0.200 spacing	1.59				68	96.11	kg		
	Reinforcement for column	5.105				24	108.9	kg		
	Reinforcement for ring 8 mm 150 spacing	0.784				185	57.3	kg		
3	Column RCC 1:1.5:3	0.23	0.23	0.875	0.046	6	0.278	Cum		
4	Soil back Filling	1	1	1.4	1.4	6	8.4	Cum		
5	Plinth Beam Excavation	27.514	0.68	0.1	1.871	1	1.871	Cum		
	Plinth Beam PCC 1:4:8	27.514	0.38	0.1	1.046	1	1.046	Cum		
	Plinth Beam Reinforcement 12 mm	33.056				4	117.5	kg		
	Plinth Beam 8 mm Ring using spacing 0.1	0.924				215	78.48	kg		
	Plinth Beam RCC 1:1.5:3	28.894	0.23	0.3	1.994	1	1.994	Cum		
6	Column RCC 1:1.5:3	0.23	0.23	3.15	0.167	6	1	Cum		
7	Solid Brick Work Tk6" with 2 door Deducti	13.42	0.2	3	8.052	1	8.052	Cum		
8	Brick Work 0.150 THICK center wall	3.2	0.15	3	1.44	1	1.44	Cum		
	Brick Work for Partition wall toilet with 2 door Deduction thick 0.075 m	4.876	0.15	2.625	1.92	1	1.92	Sqmt		
	Brick Work for urinal partion wall thick 0.075 m	3.545	0.15	1.2	0.638	1	0.638	Cum		
9	Eaves Beam RCC 1:1.5:3	28.894	0.23	0.3	1.994	1	1.994	Cum		
#	Shuttring	5.2	3.66		19.03	1	19.03	Sqmt		
#	DPC coat	4.8	3.257		15.63	1	15.63	Sqmt		
	using 10 mm dai barlonger span	5.35				34	161.7	kg		
	using 8 mm dai bar shoter span	3.81				24	36.12	kg		
	Slap Concreate RCC a:1.5:3	4.34	3.26	0.15	2.122	1	2.122	Cum		
#	Gravel Filling	4.34	3.257	0.35	4.947	1	4.947	Cum		
#	Flooring PCC 1:4:8	4.34	3.257	0.1	1.414	1	1.414	Cum		
#	Urinal Platform for girls and boys	3.26	0.6	0.15	0.293	2	0.587	Cum		
#	Plastering wall a) Outer Tk 20mm	17.72		3.375	59.81	1	59.81	Sqmt		
	Door Dedaction	1		2.13	2.13	2	4.26	Sqmt		
	b) Inner Tk 15mm	17.2		3.225	55.47	2	110.9	Sqmt		
	Door Dedaction	1		2.13	2.13	2	4.26	Sqmt		
	c) partition wall Inner Tk 1	4.3		3.225	13.87	2	27.74	Sqmt		
	d) Ceiling Tk 12mm	4.8	3.26	0.012	15.65	1	15.65	Sqmt		
#	Urinal partition wall 0.150 thick	7.69		1.2	9.228	2	18.46	Sqmt		
#	M-Sand Leveling	4.8	3.26	0.025	0.391	1	0.391	Cum		
#	Tiles a) Foolr	5	3.46		17.3	1	17.3	Sqmt		
	b) Walls	39.485		1.5	59.23	1	59.23	Sqmt		
#	Wash Basin					2	2	Nos.		
#	IWC Oriya pan					2	2	Nos.		
#	European Water Closet					2	2	Nos.		
	URINAL BASE					10	10	Nos.		
#	Doors 4 Nos plastic		1	1.85	1.85	4	7.4	Sqmt		
	main door 2 steel door	1		2.13	2.13	2	4.26			
#	vetilation	0.4	0.2		0.08	10	10	Nos.		

#	Earth Exavation for Leach pit	1	1	1	1	4	4	cum		
#	Sock pit 2 nos	1	1	1	1	4	4	Cum		
#	Drainage pipe for 0.3mdia	7.5			7.5	2	15	Rm		
#	Parapet wall	17.72	0.2	0.15	0.532	1	0.532	Cum		
	Plastering Outer	17.72		0.65	11.52	1	11.52	Sqmt		
	Inner	16.92		0.45	7.614	1	7.614	Sqmt		
#	Painting 1cote white & 1 cote Emulson	As Per Platering area			243.2	1	243.2	Sqmt		
	Enamel Paint 2 side x 4Nos	As per Door Details			14.8	4	59.2	Sqmt		
#	500 litter tank + Plumbing , Soak pit,1/2 hp motor fixing.					LS		LS		

Estimate for Toilet and Urinals					
Sl.No	Toilet and Urinal	Qty	UoM	Rate	Total Amt
1	Earthwork Excavation for footing	20.250	Cum		
2	Footing PCC 1:4:8	0.793	Cum		
3	Footing RCC 1:1.5:3	1.800	Cum		
4	Column RCC 1:1.5:3	0.349	Cum		
5	Soil back Filling	8.400	Cum		
6	Plinth Beam Excavation	1.871	Cum		
7	Plinth Beam PCC 1:4:8	1.046	Cum		
8	Plinth Beam RCC 1:1.5:3	1.994	Cum		
9	Column RCC 1:1.5:3	1.113	Cum		
10	Solid Block Work 0.200 with 2 door Deduction	8.052	Cum		
11	Brick Work 0.150 m center wall	1.440	Cum		
12	Brick Work for Partition wall toilet with 2 door Deduction	2.558	Sqmt		
	Eaves beam concrete	1.994	cum		
	shutering	19.030	Sqmt		
14	Slap Concreate RCC 1:1:5:3	2.122	Cum		
	DPC coat	15.630	Sqmt		
15	Gravel Filling	4.947	Cum		
16	Flooring PCC 1:4:8	1.414	Cum		
14	Urinal Platform PCC 1:3:8	0.587	Cum		
18	Plastering wall Outer, Inner, Center wall & Ceiling	224.064	Sqmt		
19	Urinal seprater partition for Granet w-600MM L-1200MM Thk-50 mm	4.800	Sqmt		
20	M-Sand Leveling	0.391	Cum		
21	Tiles a) Foolr	17.300	Sqmt		
	b) Walls	59.230	Sqmt		
22	Wash Basin	2	Nos.		
23	IWC Oriya pan	2	Nos.		
24	European Water Closet	2	Nos.		
25	URINAL BASINE	5	Nos.		
	Womens Urin Basin	4	Nos.		
26	Doors plastic	7.400	Sqmt		
27	Ventilation	10.0	Nos.		
	Sock pit 2 nos	4.0	Cum		
	Drainage pipe for 0.3mdia	15.0	RM		
	Parapet wall Brick work	1.595	Cum		
	Parapet wall Plastering Inner & Outer	19.132	Sqmt		

28	Painting 1cote white & 2 cote Emulson	243.20	Sqmt		
29	Enamel Paint 2 side x2 Nos.	4.26	Sqmt		
30	500 litre tank + Plumbing , Soak pit,1/2 hp motor fixing	LS	LS		
31	Electrical work	LS	LS		
32	Sundry		LS		
	Total				

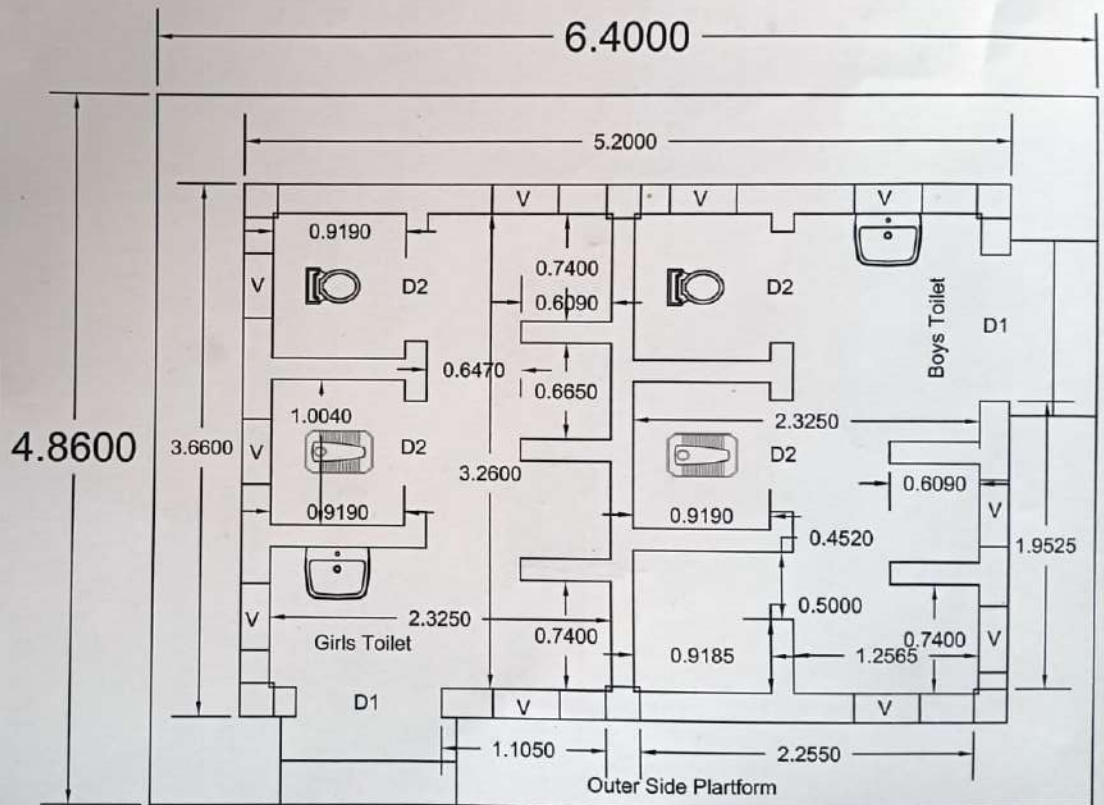
Pathaelasagiri P.U.P School

For DEEPAM RURAL DEVELOPMENT CHARITABLE TRUST

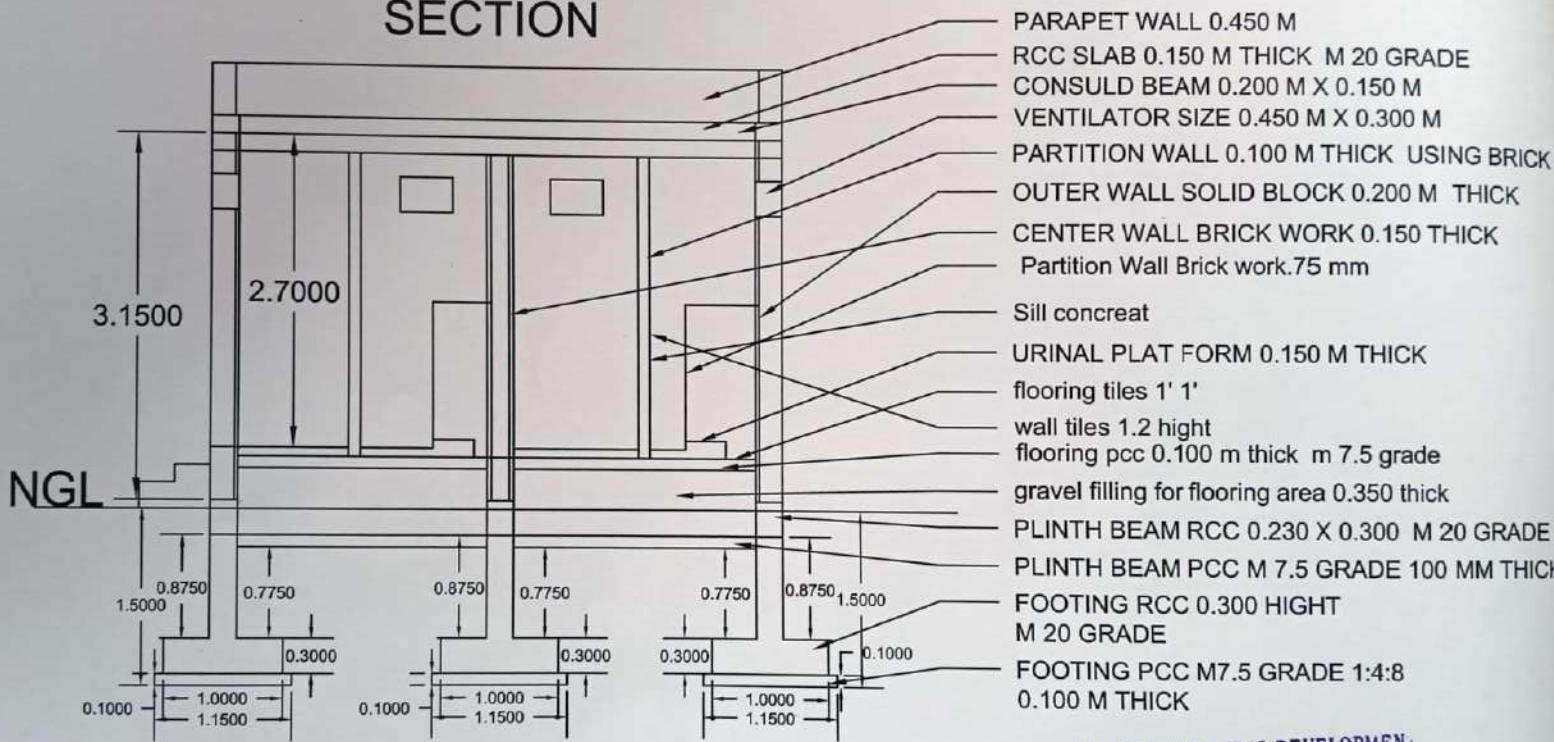
R.K.
Project Engineer

NOTE

ALL DIMENTION ARE IN METAR
 DOOR D1 SIZE = L = 1.000 H = 2.19 = 2 NOS
 DOOR D2 SIZE = 4 NOS = L = 0.761 H = 2.19
 COLUMN SIZE = L - 0.230 * B - 0.230
 COLUMN NOS = 6 NOS
 STEPS SIZE = L - 1.2 * B - 0.3 * H - 0.15 = 2 NOS
 NO. OF VENTILATOR = 10 NOS
 COLUMN AND Beam FOOTING CLEAR COVER 35 MM
 WASH BASON = 2 NOS
 WALL THICKNESS = 0.200



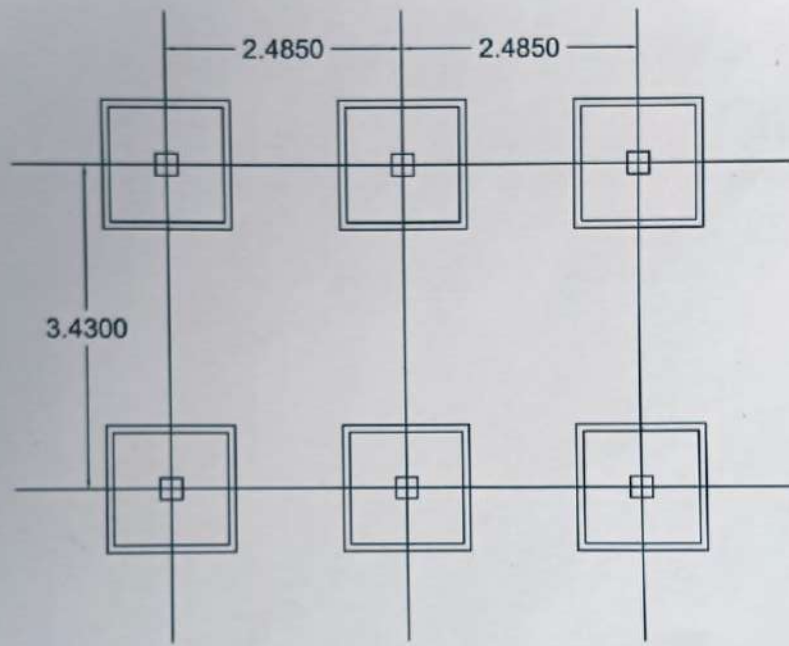
SECTION



For DEEPAM RURAL DEVELOPMENT
CHARITABLE TRUST

Rk
Project Engineer

FOOTING CENTER LINE DRAWING



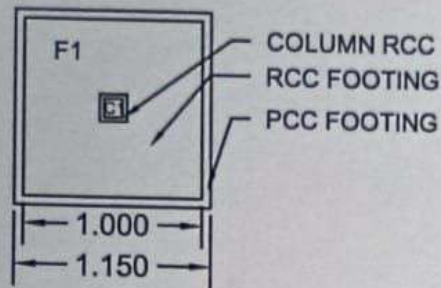
For DEEPAM RURAL DEVELOPMENT
CHARITABLE TRUST

R. S.
Project Engineer

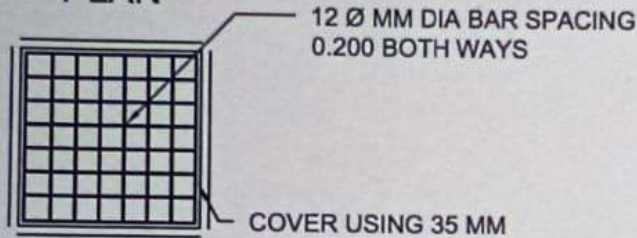
TOILET COLUMN DETAILS					
SL NO	COLUMN NO	COLUMN SIZE	MAIN BAR	STIRUPS	NO
1	C1	0.230 X 0.230	4-Y12	Y8 @150 C/ C	6

TOILET FOOTING DETAILS					
SL NO	FOTING NO	FOOTING SIZE	TOP REINFORCEMENT	BOTTOM REINFORCEMENT	NO OF FOOTING
1	F1	1 X 1 X 0.3	Y12 @ 200 c/c	Y12 @200	6

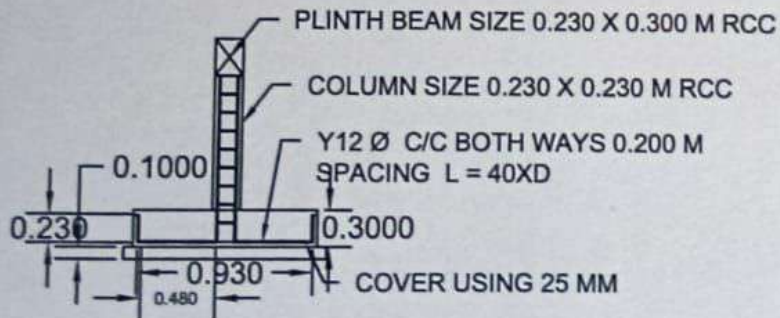
FOOTING DETAILS



PLAN

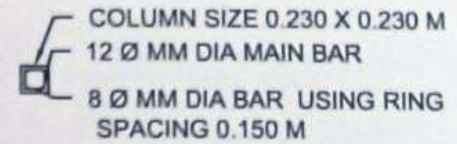


SECTION 1.2 FOOTING MAT

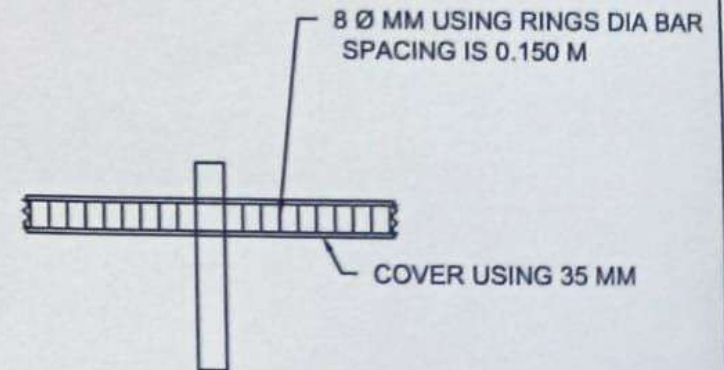
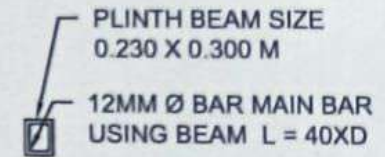


SECTION 1.1

COLUMN DETAILS



PLINTH BEAM DETAILS



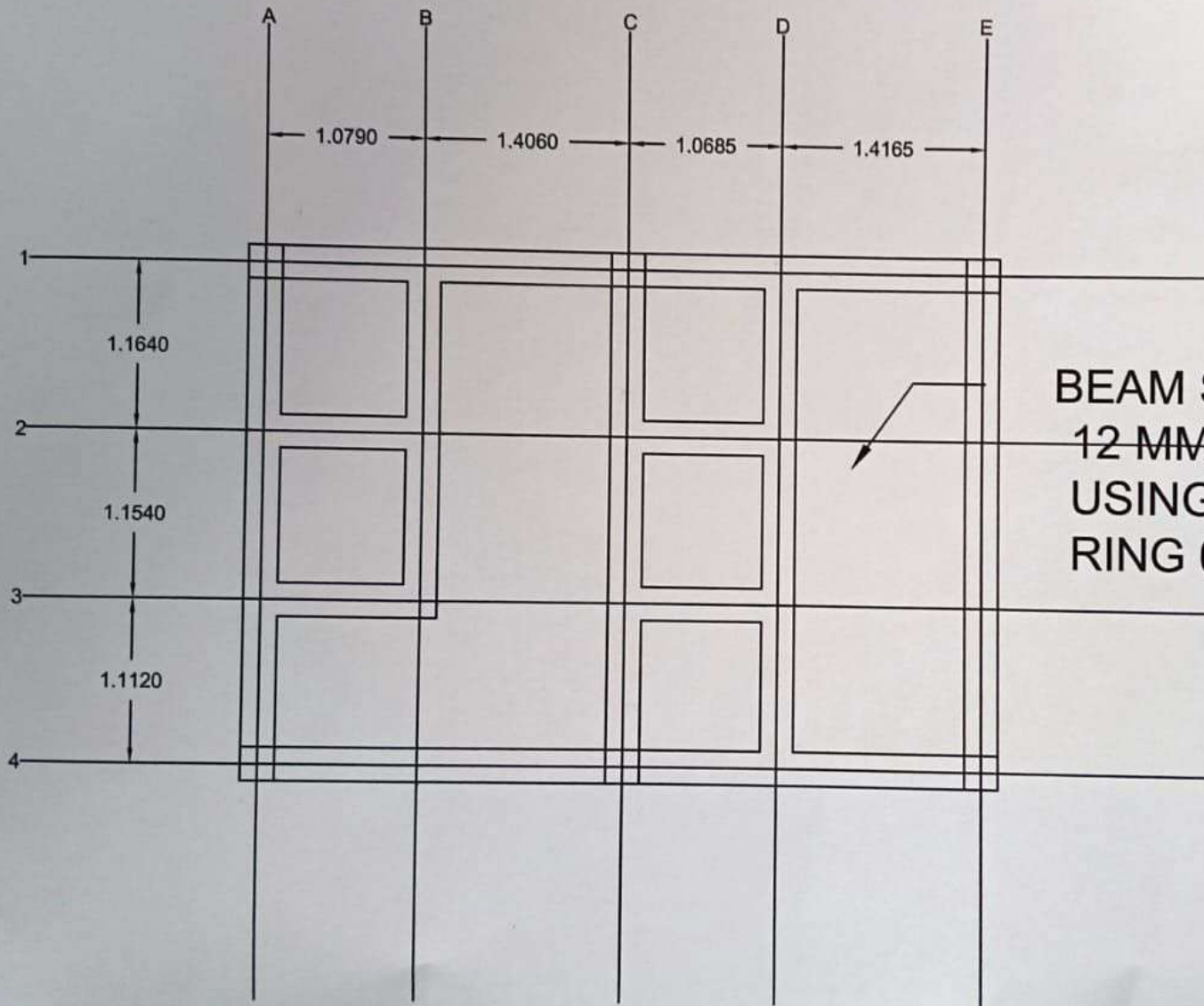
PLINTH BEAM SECTION 1.1

Sill Concreat 8 mm using dia bar

For DEEPAM RURAL DEVELOPME.
CHARITABLE TRUST

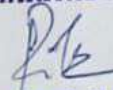
Rk
Project Engineer

PLINTH BEAM CENTER LINE DRAWING

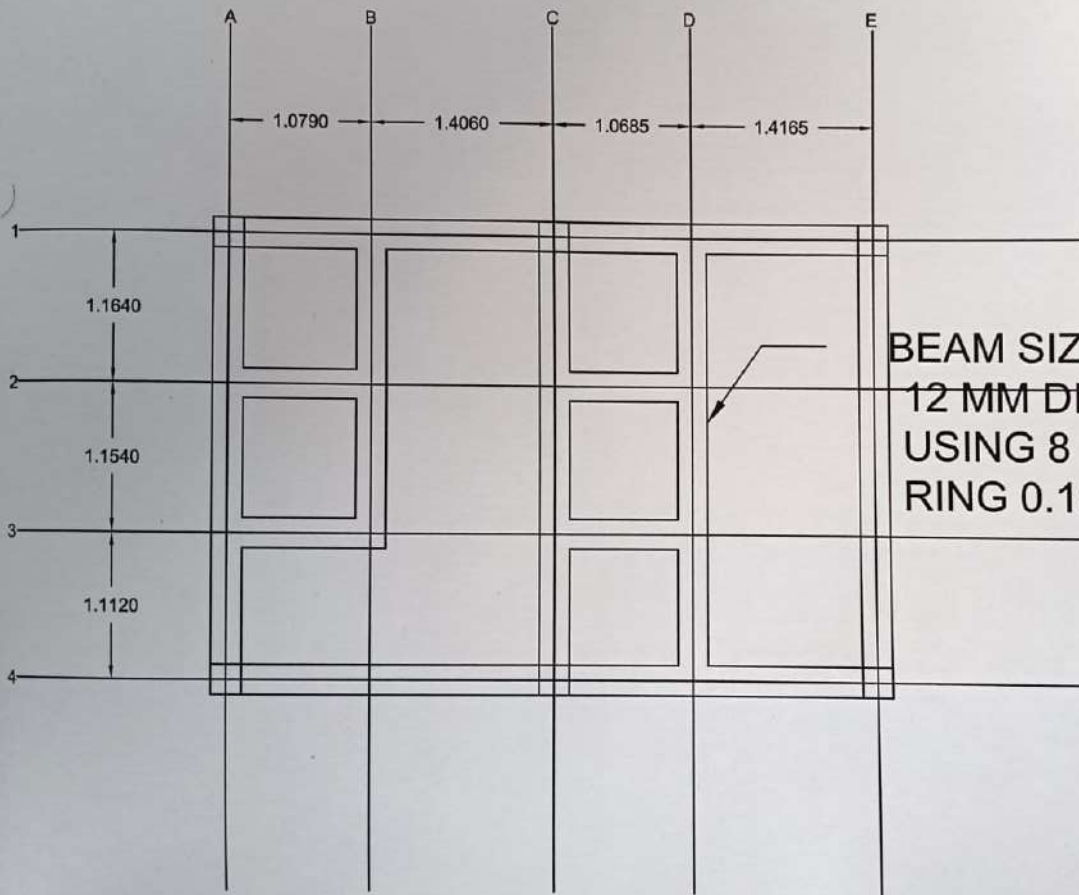


BEAM SIZE 0.230 X 0.300 M USING
12 MM DIA BAR MAIN BAR RING
USING 8 MM DIA BAR
RING 0.150 SPACING

For DEEPAM RURAL DEVELOPMENT
CHARITABLE TRUST

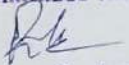

Project Engineer

EAVES BEAM



BEAM SIZE 0.230 X 0.300 M USING
12 MM DIA BAR MAIN BAR RING
USING 8 MM DIA BAR
RING 0.150 SPACING

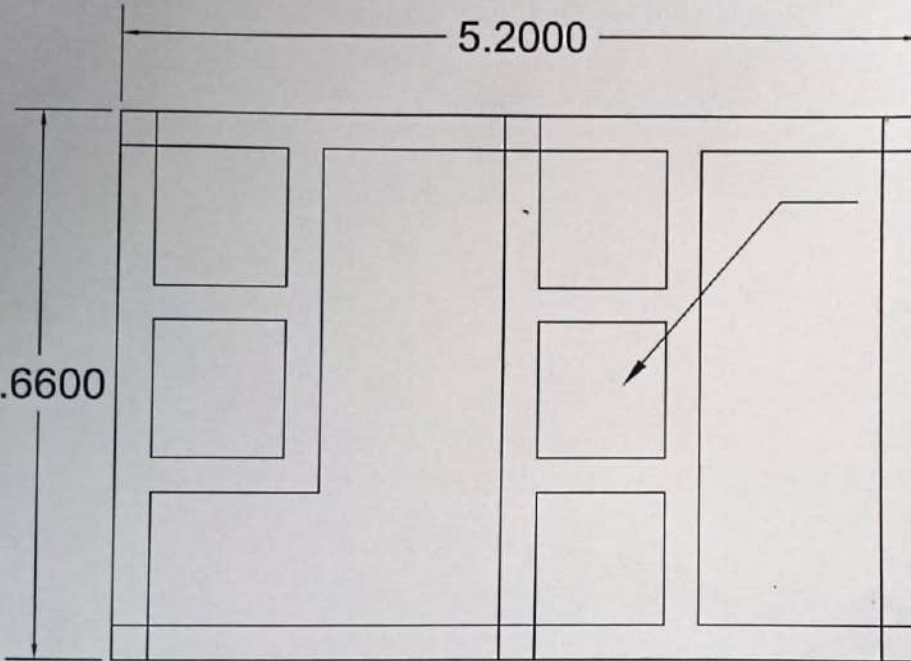
For DEEPAM RURAL DEVELOPMENT
CHARITABLE TRUST


Project Engineer

Rcc Slab

5.2000

3.6600



USING 10 MM DIA BAR
MAIN BAR 0.150 spacing
USING 8 MM DIA BAR
0.150 SPACING using
cover 0.025 m

For DEEPAM RURAL DEVELOPMENT
CHARITABLE TRUST.

Rk
Project Engineer