

Measurements for GOVINDA AGRAGARAM P.U.P. School CLASS ROOM											
Sl.No.	Name Of Materials	L	B	D	TOT	Qty	Tot Qty	UoM	Rate	Amount	
I	CLASS ROOM										
	Demolishing Old Compound Wall	12	0.2	2.1	5.04	1	5.040	cum			
	Demolishing Old Hand Wash Area	2	2.5	0.6	3	1	3.000	cum			
	Demolishing Old Flooring PCC	8.5	10	0.1	8.5	1	8.500	cum			
1	Sub Structure										
	Earthwork Excavation	1.8	1.8	1.5	4.86	8	38.880	CUM			
	Earthwork Excavation	1.3	1.3	1.5	2.535	3	7.605	cum			
	Footing PCC 1:4:8 M7.5 grade TYPE 1	1.65	1.65	0.1	0.272	8	2.178	cum			
	Footing PCC 1:4:8 M7.5 grade TYPE 2	1.15	1.15	0.1	0.132	3	0.397	CUM			
	TOTAL PCC FOOTING						2.575	CUM			
	Reinforcement 12mm for footing SIZE 1.5 x 1.5 x 0.3 = 8 nos spacing both ways 0.200 m	1.89			1.890	114	191.520	kg			
	Reinforcement 12mm for footing SIZE 1 x 1. x 0.3 = 3 nos spacing both ways 0.200 m	1.39				28	34.596	KG			
	ONLY FOOTING TOTAL WIGHT						226.116	KG			
	column Reinforcement 12mm NO OF RODS 12 AND 6 L 40 XD	5.585			5.585	76	377.298	kg			
	column Reinforcement 8mm Column size 0.300 * 0.400 using 0.150 m spacing COVER 0.035	1.184			1.184	304	142.197	kg			
	column Size 0.230 X 0.230 Rings using 8 mm dia bar spacing is 0.150 COVER 0.035 MM	0.704				114	31.706	KG			
	ONLY COLUMN TOTAL WEIGHT						551.20	KG			
	Footing RCC 1:1.5:3 M20 Grade Type 1	1.5	1.5	0.3	0.675	8	5.400	CUM			
	Footing RCC 1:1.5:3 M20 Grade Type 2	1	1	0.3	0.300	3	0.900	CUM			
	FOOTING RCC TOTAL						6.300	CUM			
	Column Concrete M 20 TYPE 1	0.3	0.4	1.1	0.132	8	1.056	CUM			
	Column Concrete M 20 TYPE 2	0.23	0.23	1.1	0.058	3	0.175	CUM			
	COLUMN CONCREAT TOTAL						1.231	CUM			
	Soil Back Filling	1.2	1.2	1.4	2.016	8	16.128	CUM			
	Soil Back Filling	0.85	0.85	1.4	1.012	3	3.035	CUM			
	Excavation For PCC	28.16	0.65	0.1	1.830	1	1.830	CUM			
	Plinth Beam PCC	28.16	0.38	0.1	1.070	1	1.070	CUM			
	Plinth Beam Reinforcement Main Bar 12MM BEAM SIZE 0.23 X 0.300 USING COVER 0.35	34.78				4	123.662	KG			
	Plinth Beam Reinforcement Ring 8MM Beam SIZE 0.230 X 0.300 USING COVER 0.35 AND Spacing 0.150 M	0.924				225	82.133	KG			
	PLINTH BEAM TOTAL WEIGHT						205.796	KG			
	Plinth Beam RCC M 20	31.73	0.23	0.3	2.189	1	2.189	CUM			
	Column Concreate M20 GRADE TYPE 1	0.3	0.4	3.325	0.399	8	3.192	CUM			
	Column Concreate M20 GRADE TYPE 2	0.23	0.23	3.325	0.18	3	0.528	CUM			
	COLUMN CONCREATE TOTAL						3.720	COM			
	Gravel filling With Ramp Included	6.929	5.635	0.3	11.713	1	11.713	cum			
	ATT Chemical using	6.929	5.635		39.045	1	39.045	sqmt			
	Flooring PCC 1:4:8 m 7.5 grade Ramp Also Included	6.929	5.635	0.15	5.857	1	5.857	cum			
2	Super Structure										
3	Brick Work 1:4	20.43	0.2	3.175	12.970	1	12.970	cum			
	Detection 1) steel door	1.219	0.2	2.133	0.520	1	0.520	cum			
	2) window 3 no	1.219	0.2	1.219	0.297	3	0.892	cum			
	total						11.558	cum			
	Plastering - a) Inner	22.59		3.225	72.846	1	72.846	sqmt			
	b) Outer	24.43		3.775	92.216	1	92.216	sqmt			
	c) Ceiling	5.659	5.635		31.888	1	31.888	sqmt			
	D)COLUM PLASTERING	0.92		3.03	2.788	3	8.363	sqmt			
	Detection 1) door	1.219		2.133	2.600	1	2.600	sqmt			
	2) window	1.219		1.219	1.486	3	4.458	sqmt			
	total						189.892	sqmt			

Sl.No.	Name Of Materials	L	B	D	TOT	Qty	Tot Qty	UoM	Rate	Amount	
	Sill Concrete RCC m20 ratio	15.55	0.23	0.05	0.179	1	0.179	cum			
	Sill Mat Reinforcement 8 mm main bar	14.71				2	12.384	kg			
	Lintel Reinforcement 1.4 x 0.23 x 0.200 using main bar 10 mm lintel for Door and Window	1.35			1.350	4	3.333	kg			
	Lintel Rings using 8mm dia bar for Door and Window spacing 0.150 Distributer	0.684			0.684	9	2.432	kg			
	LINTEL OVERALL BAR WEIGHT							5.765	KG		
	Lintel concrete for window m20 grade	1.4	0.23	0.2	0.064	4	0.258	cum			
	Sunshade Reinforcement main bar 8 mm 0.100 spacing COVER 25 MM	0.63			13.000		3.236	KG			
	Sunshade Reinforcement distributer 8 mm 0.100 spacing	1.35			6.000	2	3.200	KG			
	SUNSHADE ROD WEIGHT 1 NO							6.436	KG		
	Sunshade for window	1.4	0.45	0.075	0.047	2	0.095	cum			
	Eaves Beam Reinforcement Main Bar 12MM Beam SizeE 0.230 X 0.300 TYPE 1 Using Cover 0.35	34.78			34.678	4	123.662	KG			
	Eaves Beam Reinforcement Ring 8MM Beam Size 0.300 X 0.230 TYPE 1 Using Cover 0.35 AND Spacing 0.150 M	0.924				260	94.910	KG			
	EAVES BEAM ROD WEIGHT							218.572			
	Eaves Beam RCC 1:1.5:3 M25 0.230 X 0.3	31.46	0.23	0.3	2.170	1	2.170	cum			
3	Roof										
	Roof RCC Reinforcement Details Main Bar 10 MM 0.150 Spacing Shorter Span With Portico Wall added	7.579				37	173.101	KG			
	Roof RCC Reinforcement Details Main Bar 8 Mm 0.150 Spacing Longer Span With Portico Wall Added	6.145				50	121.383	KG			
	ROOF ROD TOTAL WEIGHT							294.483	KG		
	Over All Binding Wire						10.000	KG			
	Stair Case dowels 12 mm dia bar	1.93				8.00	13.724	kg			
	Shuttering Roof	7.619	6.095		46.438	1.00	46.438	sqmt			
	Roof RCC M 25 Grade	6.669	5.635	0.2	7.516	1	7.516	cum			
	Inner Structure Student Book Self										
	Solid Block Work For Base Slab	0.4	0.2	0.45	0.036	3	0.108	CUM			
	Plastering For Cuddapha Slab	1.2		0.45	0.540	3	1.620	SQmt			
	Cuddapha Slaps w-1' L-4' Thk-50 mm	0.306	1.219		0.373	2	0.746	sqmt			
	Inner Structure Teacher Book Self Solid Block Work	0.4	0.2	1.8	0.144	2	0.288	cum			
	Plastering For Solid Block Work	1.2		1.8	2.160	2	4.320	sqmt			
	Cuddapha Slab For Teacher Slab	0.4	1.219	1.8	0.878	3	2.633	sqmt			
	Staage For Inner Structure PCC	3	1.2	0.1	0.360	1	0.360	CUM			
	M- sand levelling Ramp Also Included	6.929	5.635	0.05	1.952	1	1.952	cum			
	VitrifyTiles 600mmx600mmx8mm	5.859	5.835		34.187	1	34.187	sqmt			
	Ramp And Steps Portico Area Tiles	7.895	1.5		11.843	1	11.843	sqmt			
	Door Details: a) Steel Door	1.219		2.133	2.600	1	2.600	Sqmt			
	b) Steel Windows	1.219		1.219		3	4.458	Sqmt			
	Steps Sold Block Work	1.5	0.3	0.15	0.068	3	0.203	CUM			
	Steps - Plastering	1.8		0.15	0.270	3	0.810	sqmt			
	Outer Side Plat Form PCC M7.5 Grade	29.86	0.6	0.1	1.792	1	1.792	CUM			
	MS Hand Rail	7.895			7.895	3	23.685	RM			
	DPC coat	7.159	5.635		40.341	1	40.341	sqmt			
	Parapet wall brick work	26.51	0.2	0.6	3.181	1	3.181	cum			
	Parapet wall Plastering Outer Tk-20mm	26.51		0.83	22.002	1	22.002	sqmt			
	Parapet Wall Plastering Inner	25.59		0.6	15.353	1	15.353	sqmt			
	TOTAL							37.354	sqmt		
	Weathering Course	6.669	5.635		37.580	1	37.580	sqmt			
4	Rain water harvesting										
	Earthwork Excavation	0.6	0.6	0.6	0.216	1	0.216	cum			

Sl.No.	Name Of Materials	L	B	D	TOT	Qty	Tot Qty	UoM	Rate	Amount
	Rings	0.6	0.6	0.6	0.216	1	0.216	cum		
	Sand	0.3	0.3	0.3	0.027	1	0.027	CUM		
	Jelly 40mm	0.3	0.3	0.3	0.027	1	0.027	CUM		
5	Painting									
	1 cote White wash, 2 cote Emulsion	AS PER PLASTERING			233.187	1	233.187	Sqmt		
	Enamel Paint Door & Windows 2 side				7.058	1	7.058	Sqmt		
	Cover Block	500		2	250	2.5	625	PICES		
6	Electrical -FAN -2No, Light-3 and PVC Pipe Wire, Switches	LS	LS	LS	LS	LS	LS			
7	Plumbing	LS	LS	LS	LS	LS	LS			
	HAND WASH									
II	Hand washing Solid block work	0.45	0.2	0.4	0.036	4	0.144	CUM		
1	Shuttering	3	0.45	0.15	0.203	1	0.2025	CUM		
	Reinforcement for 8 MM main bar spacing 0.150	2.93				3	3.473	KG		
	Reinforcement for 8 MM distributed bar spacing 0.150	0.66				19	4.954	KG		
2	RCC 1:1.5:3 M20 CONCRETE	3	0.45	0.15	0.203	1	1.170	Sqmt		
3	Brick work	3.7	0.1	0.3	0.111	1	1.443	CUM		
4	Plastering Solid block	1.1		0.4	0.44	4	1.760	sqmt		
	Brick work inner	3.7		0.3	1.11	1	1.110	sqmt		
	Brick work Outer	3.9		0.45	1.755	1	1.755	Sqmt		
5	Tiles 600mm x 600 mm	4.25		1.2	5.1	1	5.100	Sqmt		
	Hand wash Platform PCC 1:4:8	3	0.4	0.1	0.12		0.120	CUM		
	Plastering Platform	6.8	0.4		2.72		2.720	Sqmt		
6	Plumping Work With Water Tank				LS			LS		
	COMPUND WALL REBUILD									
1	Brick Work	5	0.2	1.5	7.500	1	7.500	cum		
2	Brick Work Column	0.1	0.4	1.5	0.060	2	0.120	cum		
3	Plastering WORK Inner	5		1.5	7.500	1	7.500	sqmt		
4	Plastering Work Outer	7.5		1.7	12.750	1	12.750	sqmt		
5	Primer or White Wash	100		3.2	320.000	1	320.000	sqmt		

Estimate for GOVINDA AGRAHARAM P.U.P School work

Sl.No	Description Of Work	Qty	Unit	Amount	Total Amount
II	DEMOLISING COMPOUND WALL FLOORING				
	Demolishing Old Compound Wall	5.04	CUM		
	Demolishing Old Hand Wash Area	3	CUM		
	Demolishing Old Flooring PCC	8.5	CUM		
	TOTAL A				
II	Hand Wash				
	Hand washing Solid block work	0.144	CUM		
	Hand wash Platform PCC 1:4:8	0.120	CUM		
	RCC 1:1.5:3 M20 Shutting	1.170	Sqmt		
	Brick work	1.433	cum		
	Plastering	7.34	sqmt		
	Tiles 600mm x 600 mm	5.100	Sqmt		
	Plumbing work	LS	LS		
	Water Tank 500 Liter	LS	LS		
	Miscellaneous	LS	LS		
	Total B				
III	CLASS ROOM				
	Sub Structure				
	Earthwork Mass Excavation	46.485	CUM		
	PCC 1:4:8 M7.5	2.574	CUM		
	Footing RCC 1:1.5:3	6.300	CUM		
	Column Concrete	1.230	CUM		
	Soil filling for Column	19.162	CUM		
	Excavation For Plinth Beam	1.83	CUM		
	PCC 1:4:8 M7.5 PLINTH BEAM 100 tk	1.070	CUM		
	Plinth beam RCC M20 GRADE	2.19	CUM		
	Column Concreate	3.72	CUM		
	Super Structure				
	Brick work 1:4	11.558	CUM		
	Sill concrete RCC M20 ratio	0.235	CUM		
	Plastering	189.892	sqmt		
	Lintel RCC 1:1:2 Tk-200mm	0.2576	CUM		
	Sunshade 1:1.5:3 Tk-75mm	0.0945	CUM		
	Gravel Filling inner	11.713	CUM		
	ATT Chemical using	39.045	sqmt		

	PCC Flooring	3.904	CUM		
	Stage For Inner Structure	0.360	CUM		
	M- sand levelling	1.952	CUM		
	Vitrify Tiles 600mmx600mmx8mm	34.187	sqmt		
	Portico Area Parking Tiles	11.843	SQmt		
	Solid Block Work For Cuddapha Self	0.396	sqmt		
	Cuddapha Slaps w-600MM L-1200MM Thk-50	3.379	CUM		
	Cuddapha Slaps - Plastering	5.940	sqmt		
	Door Details : a) Door 1	2.600	sqmt		
	b) Windows 3	4.457	sqmt		
	Steps	0.203	CUM		
	Steps - Plastering	0.810	sqmt		
	Eaves Beam RCC 1:1.5:3	2.170	CUM		
	Roof				
	Shuttering	46.438	sqmt		
	Slab RCC 1:1.5:3 M20	7.515	CUM		
	DPC coat	37.58	sqmt		
	Parapet wall brick work	4.771	CUM		
	Parapet wall Palstering Tk -20mm	37.353	sqmt		
	Hand Rail	23.683	RM		
	Outer Side Platform	1.7918	CUM		
	Weathering Course	37.58	sqmt		
	Painting 1 cote White wash, 2 cote Emulsion	233.995	sqmt		
	Enamel Paint 2 side	7.058	sqmt		
	Electrical PVC pipe AND RAIN WATER DROPPING PVC PIPE and Electrical 2 Tube light	7000.00	LS		
	Over all Binding wire	10.00	Kgs		
	Rain water harvesting	LS	LS		
	Miscellaneous	LS	LS		
	Total C				
	Total A+B+C				
IV	COMPUND WALL REBUILD				
	Brick Work	7.5	cum		
	Brick Work Column	0.12	cum		
	Plastering WORK	20.25	sqmt		
	Primer or White Wash	320	sqmt		
	Total D				
	Total A+B+C+D				

GOVINDA AGRAHARAM P.U.P SCHOOL

NOTE

ALL DIMENTION ARE IN METAR

DOOR SIZE = L = 1.219 H = 2.13 using steel door

NO OF DOOR = 1 NO

NO OF WINOWS = 3 NO

COLUMN SIZE = 0.300 X 0400 = NO OF COLUMN = 8

COLUMN SIZE = 0.230 X 0.230 = NO OF COLIMN = 3

USING COVER 35 MM BEAM AND COLUMN

SUNSHADE = 2 NOS

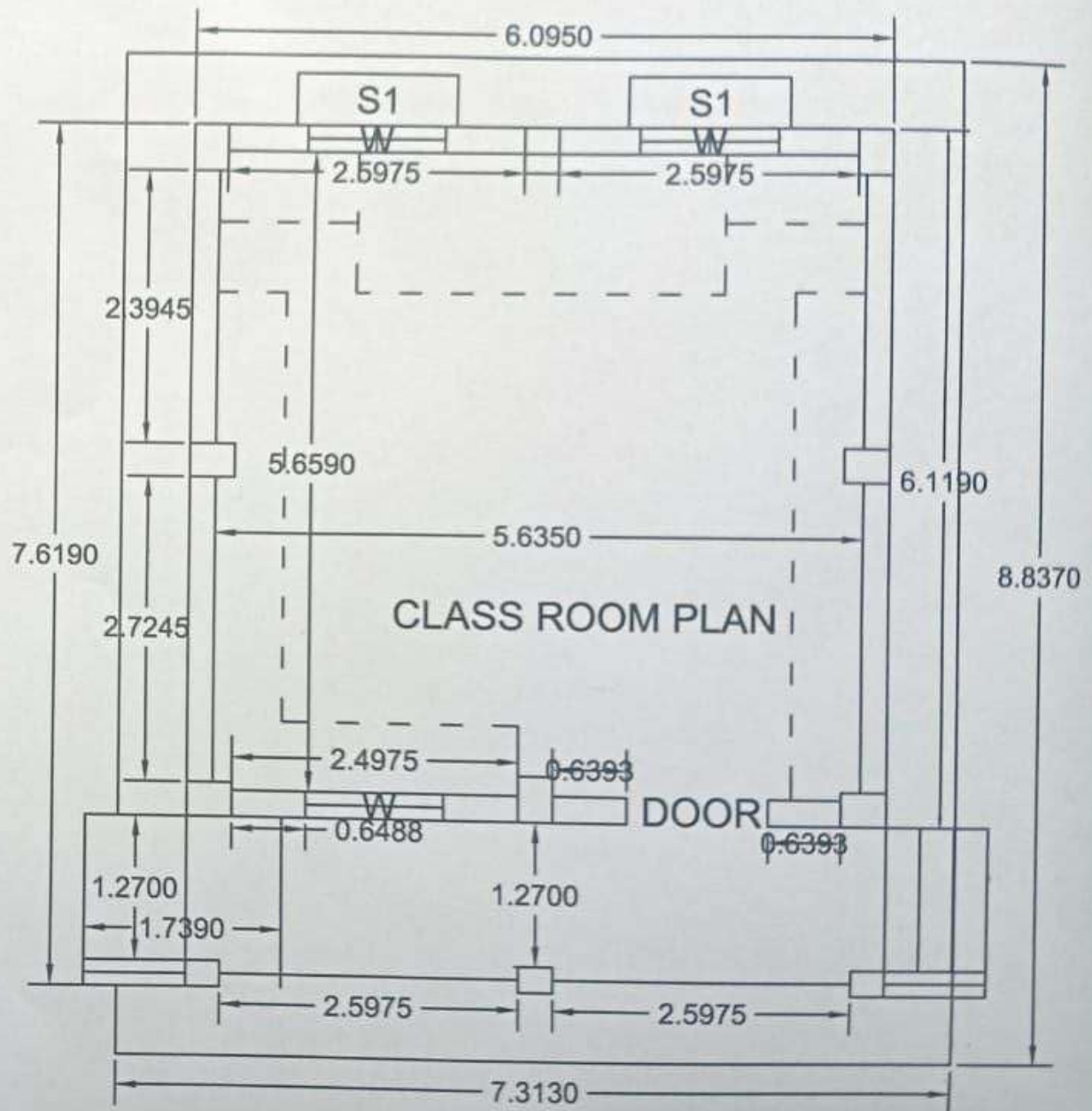
RAMP = 1.739 X 1.27 X 0.550

WALL THICKNESS = 0.230

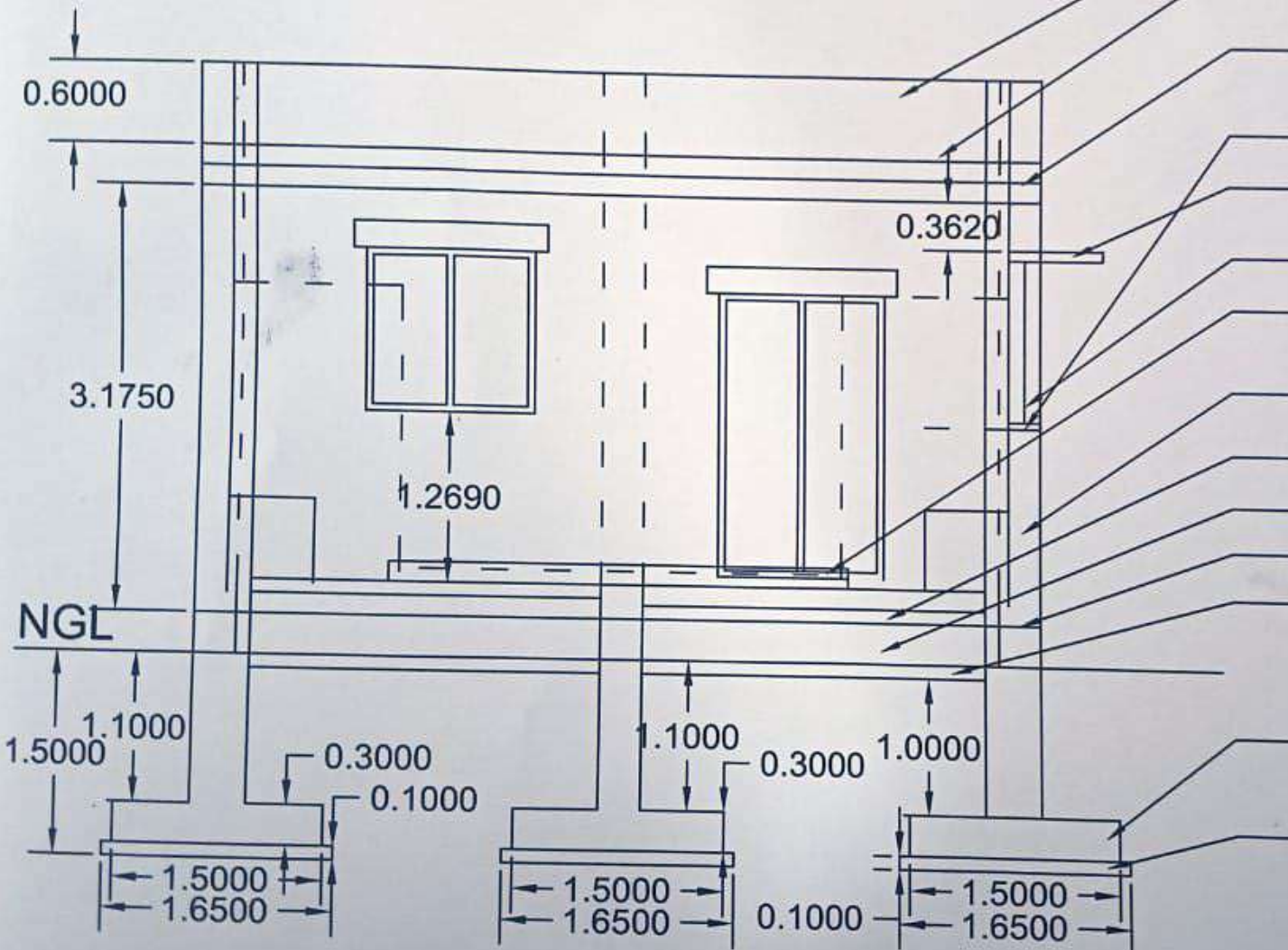
STEPS NO = 3 NOS SIZE = 1.219 X 0.300 X 0.150

For DEEPAM RURAL DEVELOPMENT,
CHARITABLE TRUST

Rk
Project Engineer



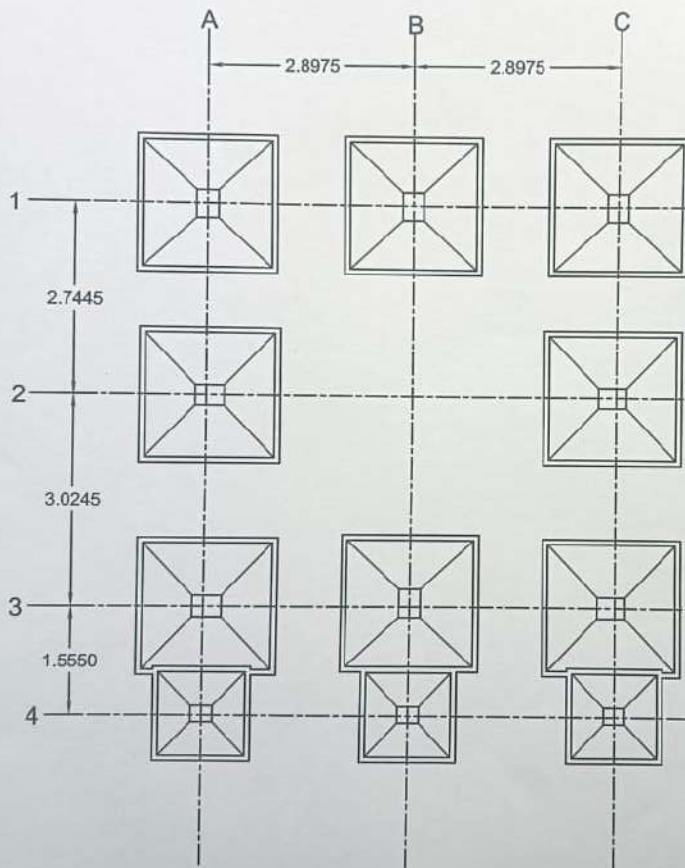
SECTION DRAWING



- PARAPET WALL 0.6 HIGHT
- RCC SLAB 0.200 THICK
- EAVES BEAM SIZE 0.230 X 0.300
- SILL CONCRETE
- SUNSHADE SIZE 1.4 X 0.450
- WINDOW SIZE 1.219 X 1.219
- VERTIFY TILLES 0.100 THICK
- WITH M SAND LEVELING
- Brick Work 0.230 WALL THICK
- FLOORING PCC 0.15 THICK
- GRAVEL FILLING 0.300 THICK
- PLINTH BEAM SIZE 0.230 X 0.300
- PLINTH BEAM PCC SIZE 0.1
- FOOTING 0.300 WITH COPING
- FOOTING PCC 0.1 THICK

For DEEPAK BUNTI
 CHARTABLE TRUST
 Project Engineer

FOOTING CENTER LINE DRAWINGS



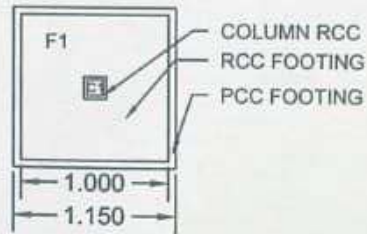
CLASS ROOM FOOTING DETAILS					
SL NO	FOOTING NO	FOOTING SIZE	TOP REINFORCEMENT	BOTTOM REINFORCEMENT	NO OF FOOTING
1	F1	1.5 X 1.5 X 0.3	Y12 @ 200 c/c	Y12 @ 200	8
2	F2	1 X 1 X 0.3	Y12 @ 200 c/c	Y12 @ 200	3

CLASS ROOM COLUMN DETAILS					
SL NO	COLUMN NO	COLUMN SIZE	MAIN BAR	RING	NO OF COLUMN
1	C1	0.400 X 0.300	Y12 @ 8	Y8 @ 150	8
2	C2	0.230 X 0.230	Y12 @ 4	Y8 @ 150	3

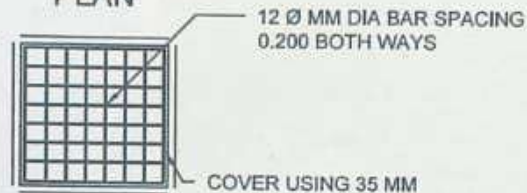
For DEEPAM RURAL DEVELOPMENT,
CHARITABLE TRUST

Rk
Project Engineer

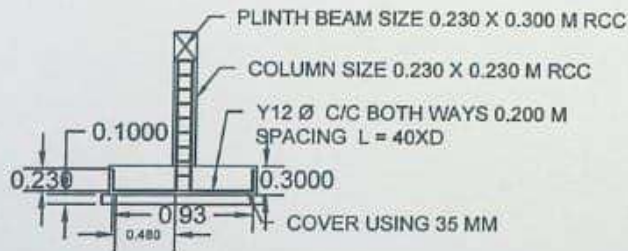
FOOTING DETAILS



PLAN

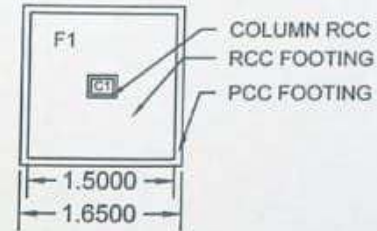


SECTION 1.2 FOOTING MAT

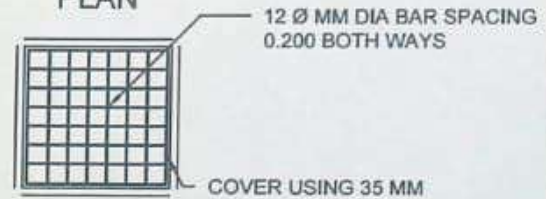


SECTION 1.1

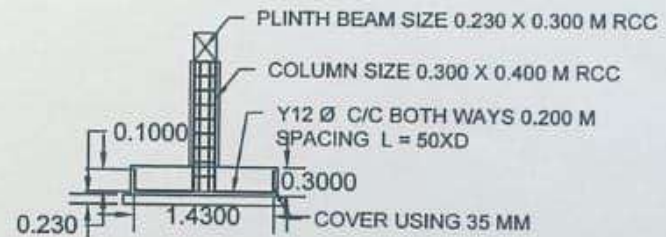
FOOTING DETAILS



PLAN



SECTION 1.2 FOOTING MAT

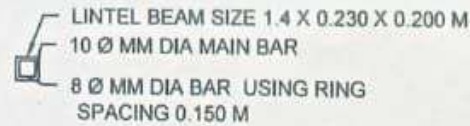


SECTION 1.1

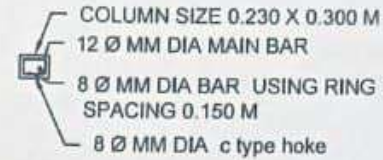
For DEEPAM RURAL DEVELOPMENT,
CHARITABLE TRUST

Rh
Project Engineer

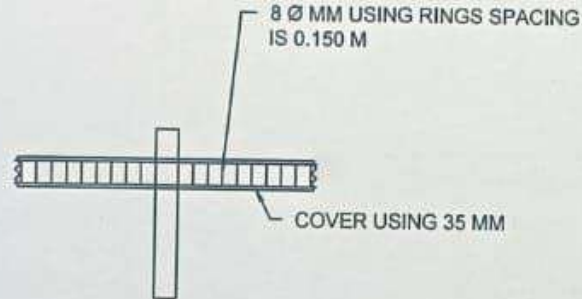
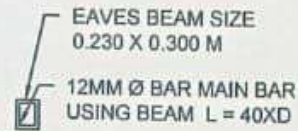
LINTEL DETAILS



COLUMN DETAILS

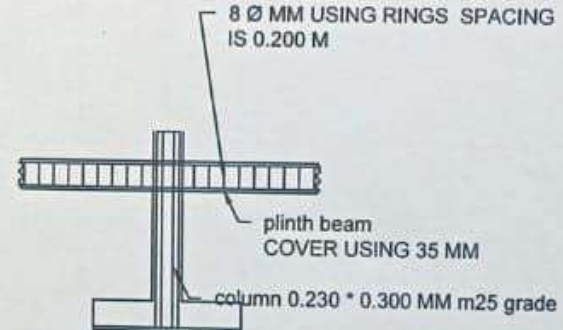
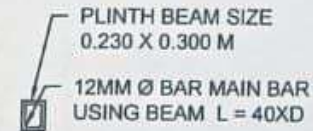


EAVES BEAM DETAILS



EAVES BEAM SECTION 1.1

EAVES BEAM DETAILS



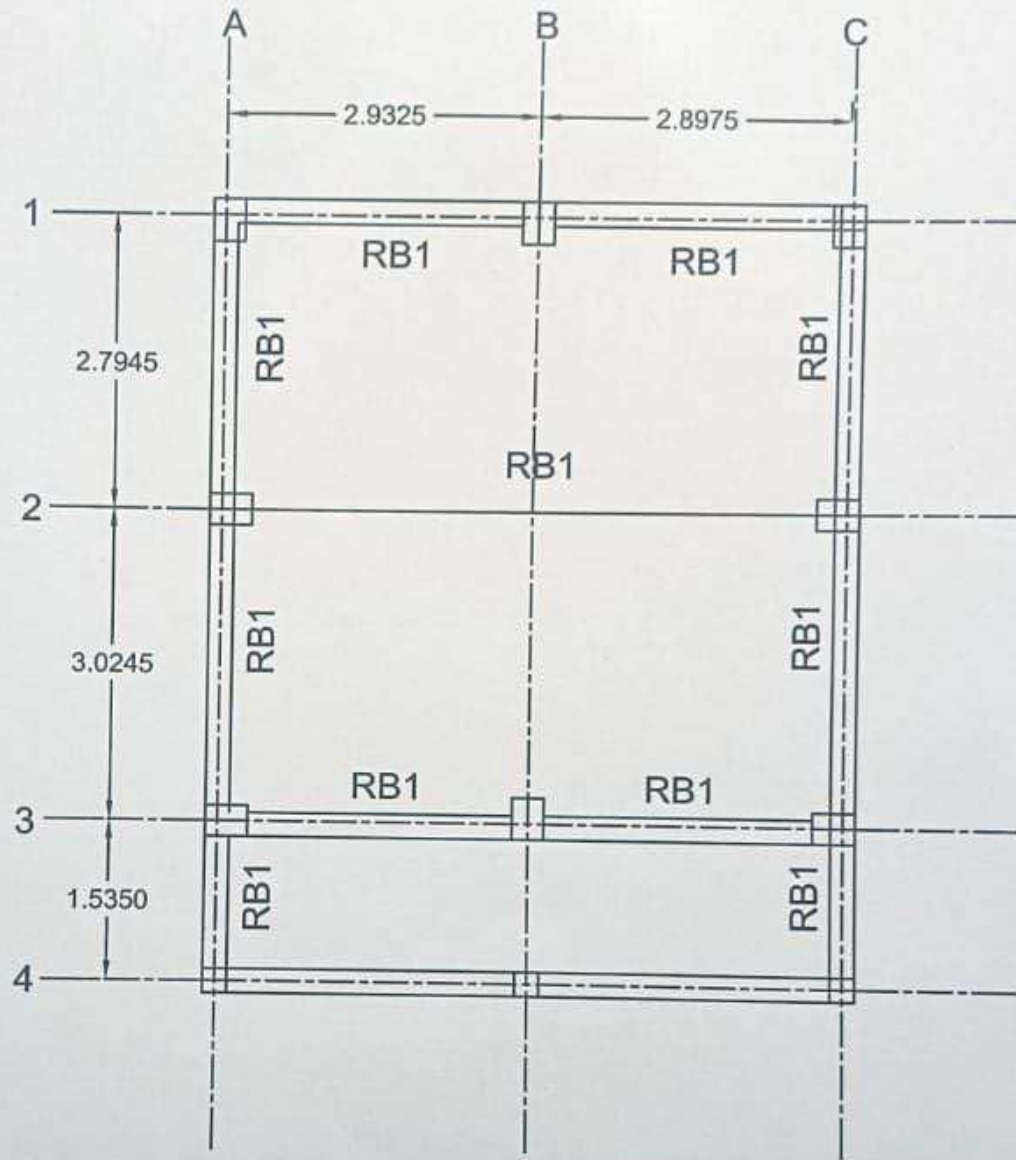
PLINTH BEAM SECTION 1.1

SILL CONCRETE 8 MM USING MAIN BAR
 LINTEL 1.4 X 0.230 X 0.200 = 4 NO
 SUNSHADE 1.4 X 0.450 X 0.075 = 2 NO

For DEEPAM RURAL DEVELOPMENT,
CHARITABLE TRUST


 Project Engineer

PLINTH BEAM CENTER LINE DRAWING

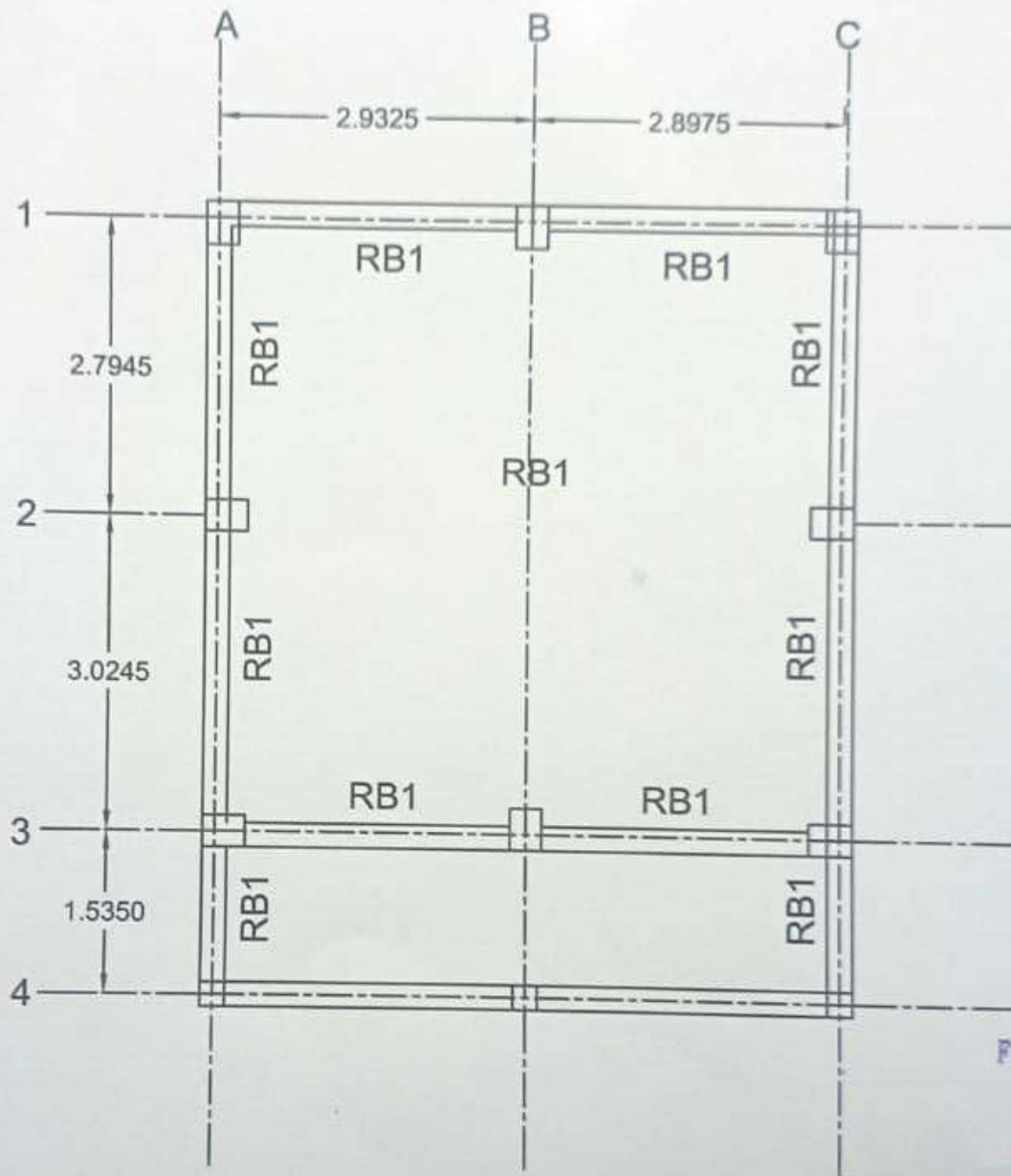


FOR DEEPAM RURAL DEVELOPMENT
CHARITABLE TRUST

R/S
Project Engineer

CLASS ROME PLINTH BEAM DETAILS				
SL NO	BEAM NO	BEAM SIZE	MAIN BAR	STIRUPS
1	RB1	0.230 X 0.300	4-Y12	Y8 @150 C/ C

EAVES BEAM CENTER LINE DRAWING

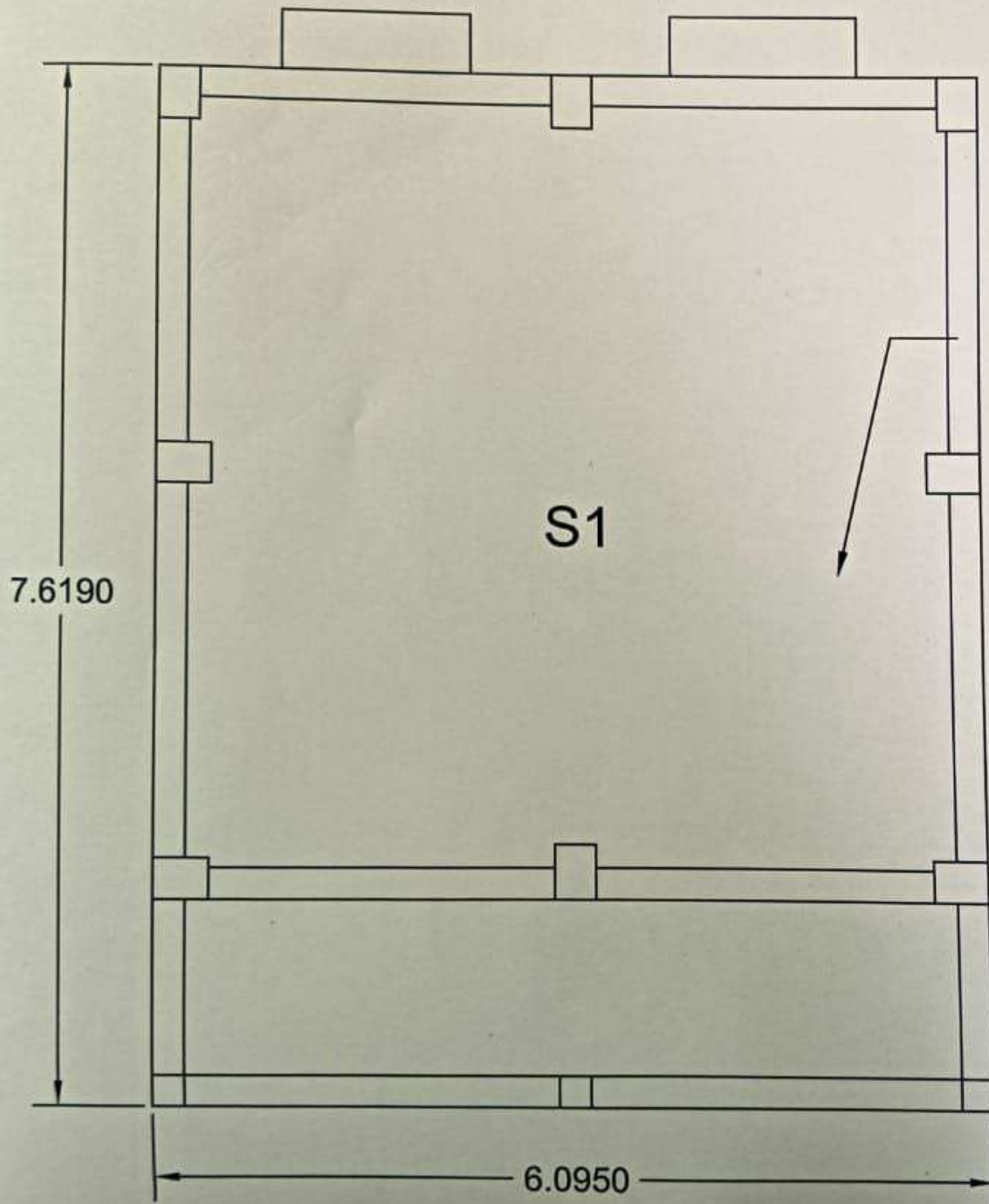


For DEEPAM RURAL DEVELOPMENT,
CHARITABLE TRUST

Project Engineer

CLASS ROME EAVES BEAM DETAILS				
SL NO	BEAM NO	BEAM SIZE	MAIN BAR	STIRUPS
1	RB1	0.230 X 0.300	4 - Y12	Y8 @150 C/ C

RCC SLAB CONCRATE



RCC SLAB 0.200 THICK
10 MM DIA BAR AND 8 MM
DIA BAR USING REINFORCEMENT
0.150 SPACING BOTH WAYS

For DEEPAM RURAL DEVELOPMENT
CHARITABLE TRUST

Project Engineer