

Chinna Elasagiri, P.U.P. School Dining Hall, Hand Wash, Kitchen Measurment								
Sl.No.	Name Of Materials	L	B	D	TOT	Qty	Tot Qty	Unit
I	Dining Hall							
1	Earthwork Excavation	2	2	1.5	6.000	6	36.00	CUM
2	Column							
	Footing PCC 1:4:8 M7.5	1.65	1.65	0.1	0.272	6	1.63	CUM
	Footing Rainforcement 12 mm Dia bar Spacing is botheways 0.200	1.89				120	201.60	Kg
	COLUMN REINFORCEMENT 12 MM DIA BAR L = 50 x D	5.53				24	117.97	Kg
	Column Rings Using 8MM Dia bar spacing 0.150 M	0.784				197	61.02	Kg
	Footing concrete RCC 1:1.5:3 M20 GRADE	1.5	1.5	0.3	0.675	6	4.05	CUM
	Column Concreate RCC 1:1.5:3 M20 GRADE	0.23	0.23	1.1	0.058	6	0.35	CUM
	Soil filling for Column	1.77	1.77	1.4	4.386	6	26.32	CUM
	Column Piller RCC 1:1.5:3 M20 GRADE	0.23	0.23	3.3	0.175	6	1.05	CUM
3	Excavation Plinth beam	41.878	0.68	0.1	2.848	1	2.85	CUM
	Rainforcement 12 mm for plint beam HORIZODEL LOPING 40 X D	45.338				4	161.20	Kg
	Rainforcement 8mm for PLINTH BEAM RINGS 0.150 SPACING AND 200 SPACING	0.924				239	87.24	Kg
	Over all Binding wire				#NAME?		12.25	Kgs
	PLINTH BEAM PCC 1:4:8 M7.5 GRADE	41.878	0.38	0.1	1.591	1	1.59	CUM
	PLINTH BEAM RCC 1:1.5:3 M20 GRADE	44.178	0.23	0.3	3.048	1	3.05	CUM
4	Solid Block SIZE (0.400 X 0.200 X 0.200)	40.628	0.2	1.8	14.626	1	14.63	CUM
5	Plastering - Solid Block Pastering Inner 20mm Tk 1:5 RATIO	41.258		1.95	80.453	1	80.45	Sqmt
	outer plastering 20mm 1:5 ratio using	42.178		2.1	88.574	1	88.57	Sqmt
	SOLID BLOCK above level COLUMN Plastering 20 mm Tk 1:5	5.52		1.5	8.280	1	8.28	Sqmt
6	Inner Structure							
	Gravel Filling inner	13.63	7.539	0.4	41.103	1	41.10	CUM
	ATT Chemical using	13.63	7.539		102.757	1	102.76	CUM
	FLORING PCC 1:4:8 M7.5 GRADE	13.63	7.539	0.1	10.276	1	10.28	CUM
	M- sand leveling for tiles	13.63	7.539	0.05	5.14	1	5.14	CUM
	Dining Seat for sold block work	0.3	0.2	0.45	0.027	84	2.27	CUM
	Dining Table for sold block work	0.3	0.2	0.75	0.045	112	5.04	CUM
	Plastering Dining Seat legs 20mm tk 1:5	1		0.45	0.450	84	37.80	Sqmt
	Plastering Dining table legs 20mm tk 1:5	1		0.75	0.750	112	84.00	Sqmt
	Cuddapha Slaps w-1' L-4' Thk-50 mm	1.2	0.3		0.36	126	45.36	Sqmt
	Verify Tiles 600mmx600mmx8mm	13.83	7.739		107.030	1	107.03	Sqmt
7	Roof							
	MS steel Pipe 6" DIA = 4No.		0.075	3.3	0.2475	4	13.20	Rm
	Base and Top Plate	0.15	0.15		0.023	8	0.18	Sqmt
	Angering Bolte double side					32	32	Nos
	A Type Beam 3" x 1 1/2"	16.696			16.696	5	83.48	RM
	Parlin Pipi 3" x 1 1/2"	14.32			14.320	8	114.56	RM
	A Type Beam support 1 1/2" x 1 1/2"	9			9.000	5	45.00	Rm

Sl.No.	Name Of Meterials	L	B	D	TOT	Qty	Tot Qty	Unit
	GI Sheet	14.69	8.599		126.319	2	252.639	Sqmt
	Ridge	14.69	0.6		8.814	1	8.814	Sqmt
	SS Screw with waser						270	Nos
8	wild mesh and side closer	43.258	1		43.258	1	43.258	Sqmt
	MS Squire Tube Pipe 11/2" x 11/2" horizontal	43 258			41	3	123	RM
	MS Squire Tube Pipe 11/2" x 11/2" vertical support	1.5			1.5	45	67.5	RM
	GI Sheet longer side top closer	27.72		0.6	16.632	9 No	16.464	Sqmt
	GI Sheet shorter side top closer	15.538		1	15.538	8 No	15:22	Sqmt
	SS Screw with waser					100 No	100	Nos
9	Door Details 2 Nos (Steel)	1		2.19	2.19	2	4.38	Sqmt
10	Outer side platform PCC 1:4:8	48.178	1	0.1	4.818		4.8178	CUM
11	Steps	1.2	0.6	0.3	0.72	2	1.44	CUM
	Plasterings	1.2	0.3		0.36	2	0.72	
12	Rain water harwesting						2	No
	Earthwork Excavation	0.6	0.6	0.6	0.216	1	0.22	cum
	Rings	0.6	0.6	0.6	0.216	1	0.22	cum
	Sand	0.3	0.3	0.3	0.027		0.027	CUM
	Jelly 40mm	0.3	0.3	0.3	0.027		0.027	CUM
13	Paint - 1 cote white 1 cote Emulsion	As per Plastering area			304.31	1	302.55	sqmt
	Enamal Paint 2 side	As per Door details			8.52	1	8.52	sqmt
14	Gutter Pipe 3"	29.3			29.3		29.3	Rm
II	HAND WASH							
1	Hand washing Solid block work	0.45	0.2	0.4	0.036	4	0.144	CUM
	Shuttering	3	0.45	0.15	0.2025	1	0.2025	CUM
	Reineforcement for 8 MM main bar spacing 0.150	2.93				3	3.472593	KG
	Reineforcement for 8 MM distrubuted bar spacing 0.150	0.66				19	4.954074	KG
	RCC 1:1.5:3 M20 CONCRETE	3	0.45	0.15	0.2025	1	1.17	Sqmt
	Brick work	3.7	0.1	0.3	0.111	1	1.443	CUM
	Plastering Solid block	1.1		0.4	0.44	4	1.76	sqmt
	brick work inner	3.7		0.3	1.11	1	1.11	sqmt
	brick work Outer	3.9		0.45	1.755	1	1.755	Sqmt
	Tiles 600mm x 600 mm	4.25		1.2	5.1	1	5.1	Sqmt
	Hand wash Platform PCC 1:4:8	3	0.4	0.1	0.12		0.12	CUM
	Plastering Platform	6.8	0.4		2.72		2.72	Sqmt
1	Lumpsam					LS		LS
III	KITCHEN							
1	Sub Structure							

Sl.No.	Name Of Materials	L	B	D	TOT	Qty	Tot Qty	Unit
	Earthwork Excavation FOTING SIZE 1.5*1.5*0.3 m	2	2	1.5	6.000	6	36	cum
	Footing PCC 1:4:8 M7.5 grade	1.65	1.65	0.1	0.272	6	1.6335	cum
	Rainforcement 12mm for footing SIZE 1.5 x 1.5 x 0.3 = 6 nos spacing both ways 0.200 m	1.89			1.890	120	201.6	kg
	column Rainforcement 12mm	5.53			5.530	24	117.973	kg
	column Rainforcement 8mm Column size 0.230 * 0.230 using 0.150 m spacing	0.784			0.784	65	20.1323	kg
	Rainforcement 8mm for Column rings cutting length size 0.300*0.300	1.064			1.064	132	55.4856	kg
	Footing concreat RCC 1:1.5:3 M20	1.5	1.5	0.3	0.675	6	4.05	cum
	Column Concreate RCC 1:1.5:3	0.3	0.3	1.1	0.099	4	0.396	cum
	Column Concreate RCC 1:1.5:3	0.23	0.23	1.1	0.058	2	0.11638	cum
	Soil filling for Column	1.77	1.77	1.4	4.386	6	26.3164	cum
2	Plinth Beam Earthwork Excavation	11.428	0.65	0.1	0.743	1	0.74282	cum
	Plinth beam PCC 1:4:8 M7.5 100 tk	11.428	0.38	0.1	0.434	1	0.43426	cum
	Plint Beam Rainforcement 12mm main bar L - 40 x d beam size 0.230 x 0.300 m	14.488			14.488	4	51.5129	kg
	Beam ring using 8 mm dia bar spacing is 2 legged type so 0.150 spacing and 0.200	0.454			0.454	65	11.6583	kg
	Plinth beam RCC 1:1.5:3 M20	14.568	0.23	0.3	1.005	1	1.00519	cum
	Column Piller RCC 1:1.5:3 M20	0.3	0.3	3.3	0.297	4	1.188	cum
	Column Piller RCC 1:1.5:3 M20	0.23	0.23	3.3	0.175	2	0.34914	cum
3	Super Structure							
	Solid Block work (400x200x200mm) 1:4	11.428	0.2	3.3	7.542	1	7.54248	cum
	<u>Detaction</u> 1) steel door	1	0.2	0.219	0.044	1	0.0438	cum
	2) window 2 no	0.6	0.2	1.2	0.144	2	0.288	cum
	total				0.332		7.211	cum
	Sill concreat rcc m20 ratio	9.231	0.2	0.05	0.092	1	0.09231	cum
	Sill mat reinforcement 8 mm main bar using 0.150 spacing diatributer length included	27.693				1	10.9404	kg
	Lintel reinforcement 1.4 x 0.23 x 0.200 using mai bar 10 mm lintel for door	1.35			1.350	4	3.33333	lkg
	Lintel rings usaing 8mm dia bar for door spacing 0.150	0.474			0.474	9	1.68533	kg
	Sunshade for the door reinforcement details using 8 mm main bar and distributer bar also both ways 0.150 spacing	7.206			7.206	1	2.84681	kg
	Lintel renforcement for window 10 mm main bar 2 lintel	0.95			0.950	8	4.69136	kg
	Window lintel beam rings 0.100 m spacing 2 lintels using 8 mm dia bar	0.474			0.474	18	3.37067	kg
	Lintel concreat for window m20 grade	1	0.23	0.2	0.046	2	0.092	cum
	Lintel concreat for door m20 grade	1.4	0.23	0.2	0.064	1	0.0644	cum
	Sunshade for the door	1.4	0.45	0.1	0.063	1	0.063	cum
	Sunshade for window	1	0.45	0.1	0.045	2	0.09	cum
	Plastering - a) Inner	11.888		3.15	37.447	1	37.4472	sqmt
	b) Outer	12.048		3.45	41.566	1	41.5656	sqmt
	c) Celing	3.656	2.288		8.365	1	8.365	sqmt
	d) door and window side	11.58	0.23		2.663	1	2.316	sqmt

Sl.No.	Name Of Meterials	L	B	D	TOT	Qty	Tot Qty	Unit
	Detaction 1) door	1		2.19	2.190	1	2.19	
	2) window	0.6		1.2	0.720	2	1.44	
	total						86.064	
	Gravel filling	3.656	2.288	0.4	3.346	1	3.346	cum
	ATT Chemical using	3.656	2.288		8.365	1	8.365	sqmt
	Flooring PCC 1:4:8 m 7.5 grade	3.656	2.288	0.1	0.836	1	0.836	cum
	Kitchen Platform PCC 1:4:8 M7.5	2	0.65	0.1	0.130	1	0.13	cum
	M- sand leveling	3.656	2.288	0.05	0.418	1	0.418	cum
	Verify Tiles 600mmx600mmx8mm	3.756	2.488		9.345	1	9.345	sqmt
	Brick Work for cuddapha slap	0.2	0.6	2	0.120	2	0.24	cum
	Cuddapha Slaps w-2' L-4' Thk-50 mm	1.2	0.6		0.720	4	2.88	sqmt
	Cuddapha Slaps - Plastering	1.35		2	2.700	2	5.4	sqmt
	Door Details: a) Steel Door	1		2.19		1	2.19	Sqmt
	b) Steel Windows	0.6		1.2		2	1.44	Sqmt
	Plumbing and Electrical					LS		
	Steps	1.2	0.6	0.15	0.720	1	0.72	CUM
	Steps - Plastering	1.2	0.3		0.360	2	0.72	sqmt
	Eaves beam reinforcemen 12 mm dia main bar	14.488			14.488	4	51.5129	Kg
	Eaves beam Rainforcement using 8 mm dia bar rings 2 legged ring spscing is 0.150 m and 0.200 m	0.454			0.454	65	11.6583	sqmt
	Eaves Beam RCC 1:1.5:3 M20	14.568	0.23	0.3	1.005	1	1.00519	cum
4	Roof							
	Shutring	3.656	2.288		8.365	1	8.365	sqmt
	Rainforcement 10mm for slab cutting length	4.066			4.066	17	42.668	kg
	Rainforcement 8mm for for slab distributer cutting length	2.828			2.828	27	30.165	kg
	RCC 1:1.5:3 M20	3.656	2.288	0.15	1.255	1	1.255	cum
	DPC coat	4.116	2.748		11.311	1	11.311	sqmt
	Parabit wall solid block	13.73	0.2	0.6	1.648	1	1.6476	cum
	Parabit wall Palstering Inner Outer Tk-20mm	26.94		0.6	16.164	1	16.164	cum
	Compaction	3.767	2.588		9.749	1	9.749	sqmt
	Weathering Course	3.767	2.588		9.749	1	9.749	sqmt
5	Painting							
	1 cote White wash, 2 cote Emulson	As Per Plastering area			108.348	1	108.348	Sqmt
	Enamel Paint Door & Windows 2 side	As per Door, window			8.520	1	8.520	Sqmt
6	Electrical and Plumbing					LS	LS	LS

Chinna Elasagiri P.U.P School Estimate Sheet for Dining, Handwash and Kitchen

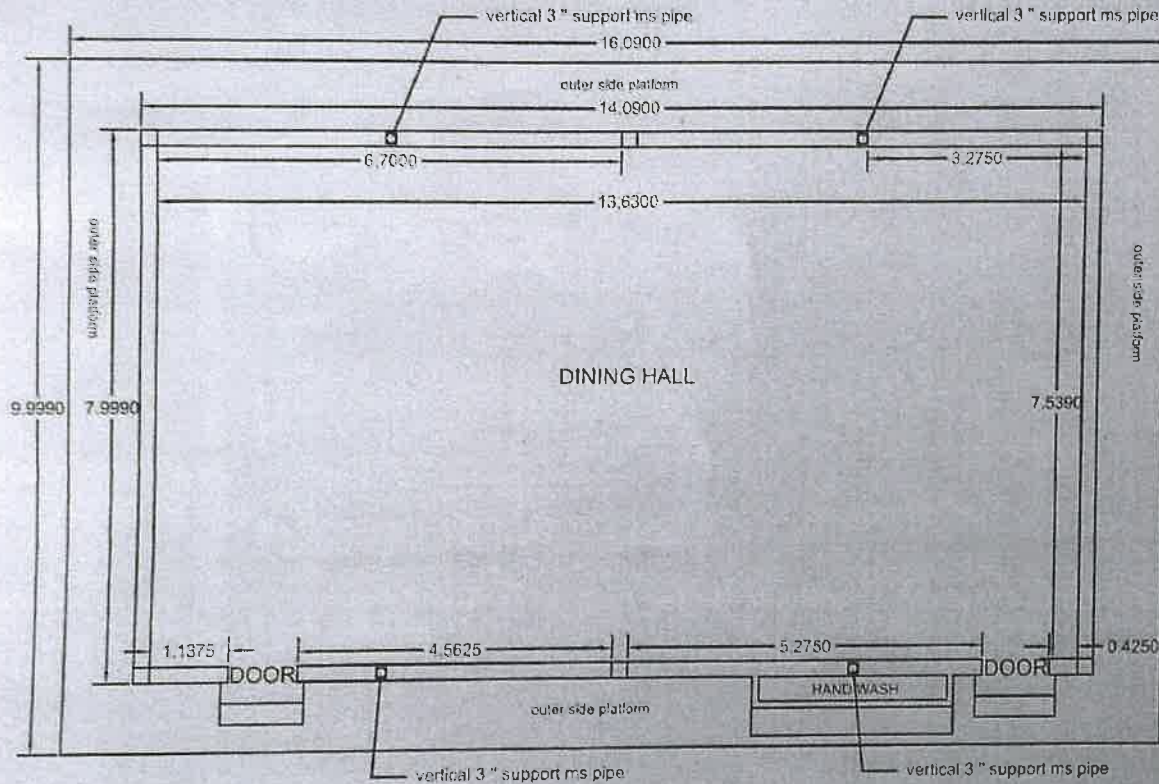
S.NO	Description Of Work	Qty	Unit	Amount	Total Amount
I	Dining Hall				
1	Earthwork Excavation	36.000	CUM		
2	Column				
	PCC 1:4:8 M7.5	1.630	CUM		
	RCC 1:1.5:3 Footing Concreate	4.050	CUM		
	RCC 1:1.5:3 for column Concreate	1.400	CUM		
	Soil filling for column for 4 Mazdoor	26.320	CUM		
3	Plinth beam				
	Excavation	2.850	CUM		
	PCC 1:4:8 M7.5	1.590	CUM		
	RCC 1:1.5:3 M20	3.050	CUM		
4	SUPER Structure				
4	Solid Block work (400x200x200mm) 1:4	14.630	CUM		
	Plastering - Solid Block Pastering Inner, Outer & column above level 20 mm Tk 1:6	177.310	Sqmt		
5	Inner Structure				
	Gravel Filling inner	41.100	CUM		
	ATT Chemical using	102.760	Sqmt		
	PCC 1:4:8	10.280	CUM		
	M- sand leveling	5.140	CUM		
	Dining Seat & Table for sold block work 2 side	7.310	CUM		
	Plastering Dining Seat & legs 20mm tk 1:6	121.800	Sqmt		
	Cuddapha Slaps w-2' L-4' Thk-50 mm	45.360	Sqmt		
	Vertify Tiles 600mmx600mmx8mm	107.030	Sqmt		
6	Roof				
	MS Pipe 6" dia	13.200	mts		
	Base and Top Plate	0.180	Sqmt		
	Angering Bolte double side	32.000	Nos		
	A Type Beam and Parlin 3" x 1.5"	198.040	RM		
	A Type Beam support 1.5" x 1.5"	45.000	RM		
	GI Sheet 24 gauge	252.640	Sqmt		
	Ridge	8.814	Sqmt		
	Gutter Pipe 3"	LS	Ls		
8	Welded wire Mesh and side top closer				
	Welded wire Mesh and side top closer	43.250	Sqmt		
	MS Squire Tube Pipe 1.5" x 1.5" horizontal vertical support	190.500	RM		
	GI Sheet longer & shorter side top closer 24 gauge	17.104	Sqmt		
8	Door Details 2 Nos	4.380	Sqmt		
9	Outer side platform PCC 1:4:8	4.817	CUM		
10	Steps				
	Plasterings	0.720	sqmt		
11	Painting - 1 cote white wash 2 cote Emulsion Inner & Out	304.310	Sqmt		
	Enamel Paint Door 2	8.760	Sqmt		
12	Rain water harwesting	LS	LS		
	Total A				
II	Hand Wash				

S.NO	Description Of Work	Qty	Unit	Amount	Total Amount
1	Hand washing Solid block work	0.144	CUM		
	Hand wash Platform PCC 1:4:8	0.120	CUM		
	RCC 1:1.5:3 M20 Shutrting	1.170	Sqmt		
	Brick work	1.433	cum		
	Plasterings	7.34	sqmt		
	Tiles 600mm x 600 mm	5.100	Sqmt		
2	Plumbing work	LS	LS		
1	Miscellaneous	3000.00	LS		
	Total B				
III	Kitchen				
	Sub Structure				
	Earthwork Excavation	36.000	CUM		
	PCC 1:4:8 M7.5	1.633	CUM		
	Footing & Column concreate RCC 1:1.5:3 M20	4.562	CUM		
	Soil filling for Column	26.316	CUM		
	Plinth Beam Earthwork excavation	0.742	CUM		
	PCC 1:4:8 M7.5 100 tk	0.434	CUM		
	Plinth beam & Column Piller RCC 1:1.5:3 M20	2.542	CUM		
	Super Structure				
	Solid Block work (400x150x200mm) 1:4	7.210	CUM		
	Sill concreat RCC M20 ratio	0.092	CUM		
	Plastering	86.064	sqmt		
	Lintel RCC 1:1.5:3 Tk-200mm	0.156	CUM		
	Sunshade 1:1.5:3 Tk-75mm	0.153	CUM		
	Gravel Filling inner	3.364	CUM		
	ATT Chemical using	8.365	sqmt		
	PCC 1:4:8	0.836	CUM		
	Kitchen Platform PCC 1:4:8 M7.5	0.130	CUM		
	M- sand leveling	0.418	CUM		
	Vertify Tiles 600mmx600mmx8mm	9.345	sqmt		
	Brick Work for cuddapha slap	0.240	sqmt		
	Cuddapha Slaps w-600MM L-1200MM Thk-50 mm	2.880	CUM		
	Cuddapha Slaps - Plastering	5.400	sqmt		
	Door Details : a) Door 1	2.190	sqmt		
	b) Windows 2	1.440	sqmt		
	Steps	0.720	CUM		
	Steps - Plastering	0.720	sqmt		
	Eaves Beam RCC 1:1.5:3 M20	1.005	CUM		
	Roof				
	Shuttring	8.365	sqmt		
	slab RCC 1:1.5:3 M20	1.255	CUM		
	DPC coat	11.311	sqmt		
	Parapet wall solid block	1.647	CUM		
	Parapet wall Palstering Tk -20mm	16.164	sqmt		
	Compaction	9.749	CUM		

S.NO	Description Of Work	Qty	Unit	Amount	Total Amount
	Weathering Course	9.749	sqmt		
	Painting 1 cote White wash, 2 cote Emulson	108.348	sqmt		
	Enamel Paint 2 side	8.52	sqmt		
	Plumbing & Electrical pvc pipe water tab 1, and Electrical 1Tube light wirh switch-4, 3 adapter wiring item with exhaust fan 1no	7000.00	LS		
	Over all Binding wire	1.00	Kgs		
	Miscellaneous	3000.00	LS		
	Total C				
	Total A+B+C				

Chinna Elasagiri Dining Hall

No: 57



NOTE

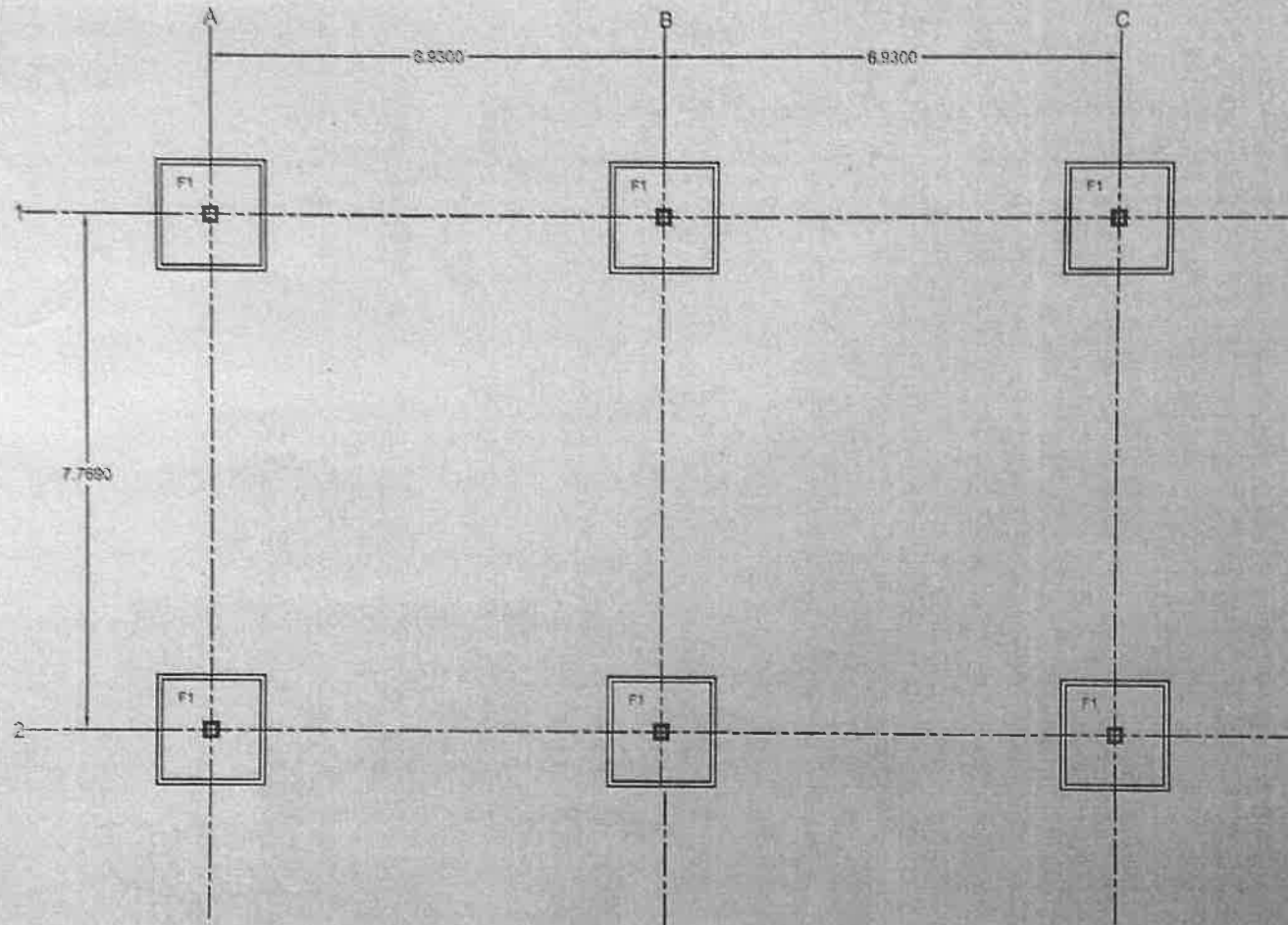
ALL DIMENTION ARE IN METAR
 DOOR SIZE = L = 1.000 H = 2.19
 NO OF DOOR = 2 NOS
 COLUM SIZE = L - 0.230 * B - 0.230
 COLUMN NOS = 6 NOS
 STEPS SIZE = L - 1.2 * B - 0.3 * H - 0.15 = 2 NOS
 NO OF STEP = 2 NOS
 HAND WASH PLAT FORM SIZE = L - 3.000 * B - 0.400
 HAND WASH SIZE = L - 3.000 * B - 0.450
 WALL THICKNESS = 0.230

DINING HALL DOOR DETAILS MADIVALAM			
SL NO	DESCRIPTION	SIZE	NO OF COLUMN
1	Steel Door	3 x 7	2

Adrikan
 Civil Engineer,
 Samagra Shiksha,
 State Project Directorate,
 DPI Campus, Nungambakkam,
 Chennai - 600 006.
 02/11/23

For DEEPAM RURAL DEVELOPMENT CHARITABLE TRUST
[Signature]
 State Civil Consultant,
 Samagra Shiksha,
 State Project Directorate,
 DPI Campus, Nungambakkam,
 Chennai - 600 006.
 Project Engineer

FOOTING CENTER LINE DRAWINGS



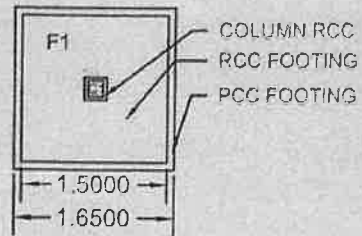
DINING HALL COLUMN DETAILS					
SL NO	COLUMN NO	COLUMN SIZE	MAIN BAR	STIRUPS REINFORCEMENT	NO OF COLUMN
1	C1	0.240 X 0.230	4-Y12	78@150 C/C	6

DINING HALL FOOTING DETAILS					
SL NO	FOOTING NO	FOOTING SIZE	TOP REINFORCEMENT	BOTTOM REINFORCEMENT	NO OF FOOTING
1	F1	1.5 X 1.5 X 0.3	Y12 @200 C/C	Y12 @200 C/C	6

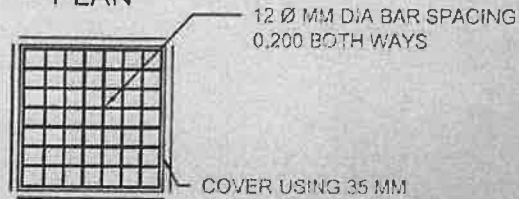
For DEEPAM RURAL DEVELOPMENT
CHARITABLE TRUST

Rohit
Project Engineer

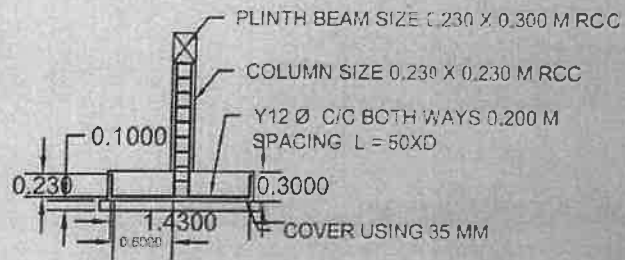
FOOTING DETAILS



PLAN

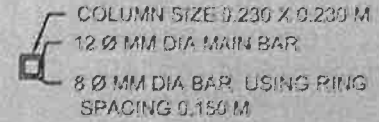


SECTION 1.2 FOOTING MAT

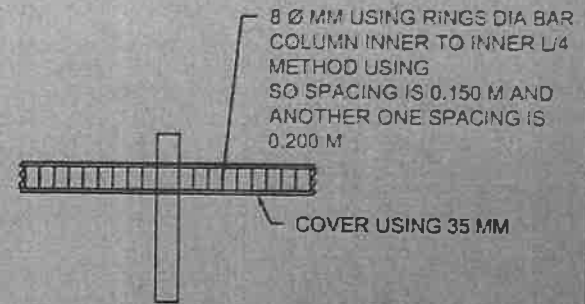
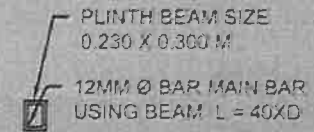


SECTION 1.1

COLUMN DETAILS



PLINTH BEAM DETAILS

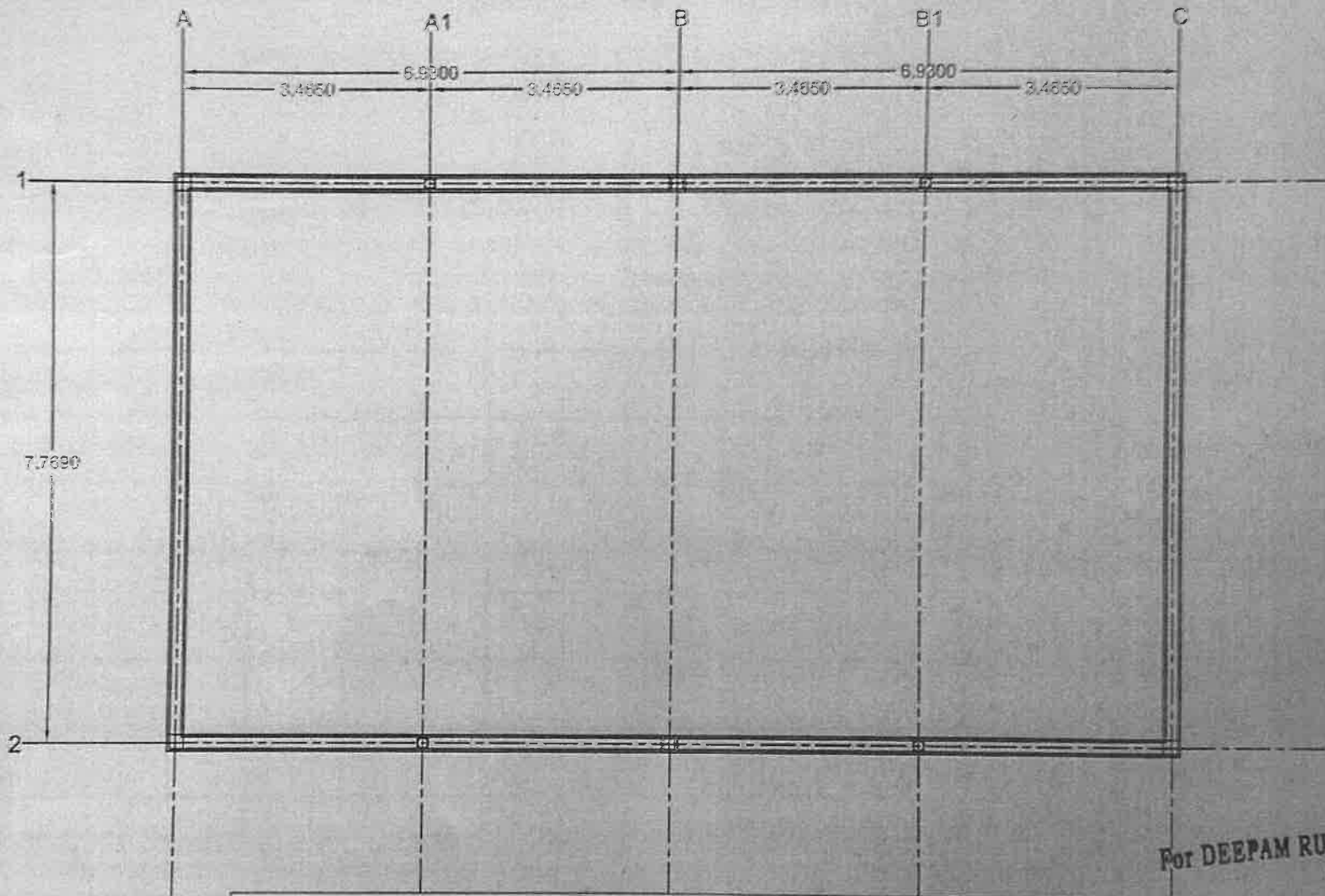


PLINTH BEAM SECTION 1:1

For DEEPAM RURAL DEVELOPMENT CHARITABLE TRUST

[Signature]
Project Engineer

PLINTH BEAM CENTER LINE DRAWING

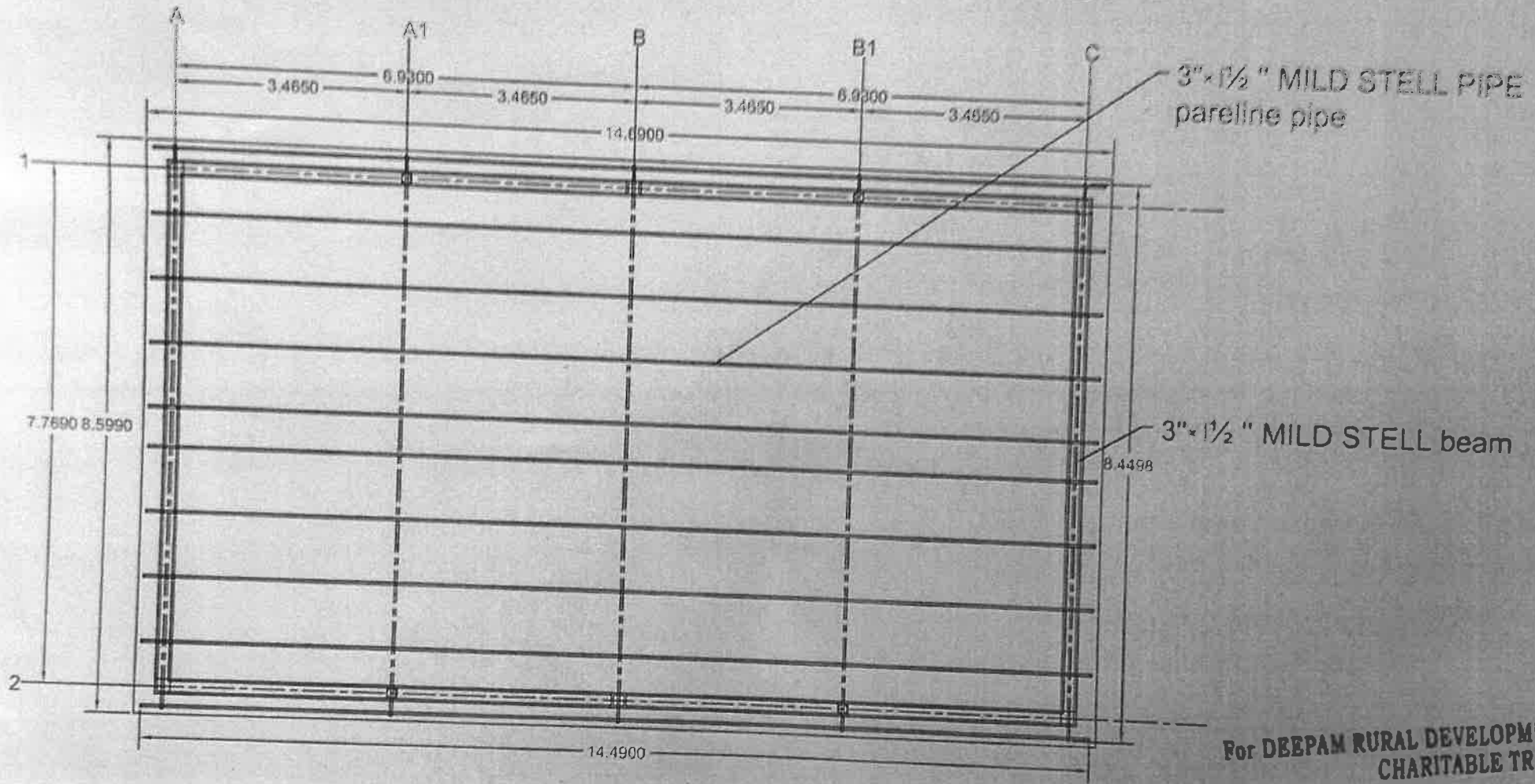


DINING HALL SCHEDULE FOR PLINTH BEAM REINFORCEMENT DETAILS						
SL NO	BEAM NO	BEAM SIZE	TOP REINFORCEMENT	BOTTOM REINFORCEMENT	STIRUPS REINFORCEMENT DETAILS	NO OF BEAM
1	RB1	0.230 X 0.300	2- Y12	2- Y12	Y 8- 2LEGGED @ 150 C/C Y 8- 2LEGGED @ 200 C/C	1

For DEEPAM RURAL DEVELOPMENT CHARITABLE TRUST

RLS
Project Engineer

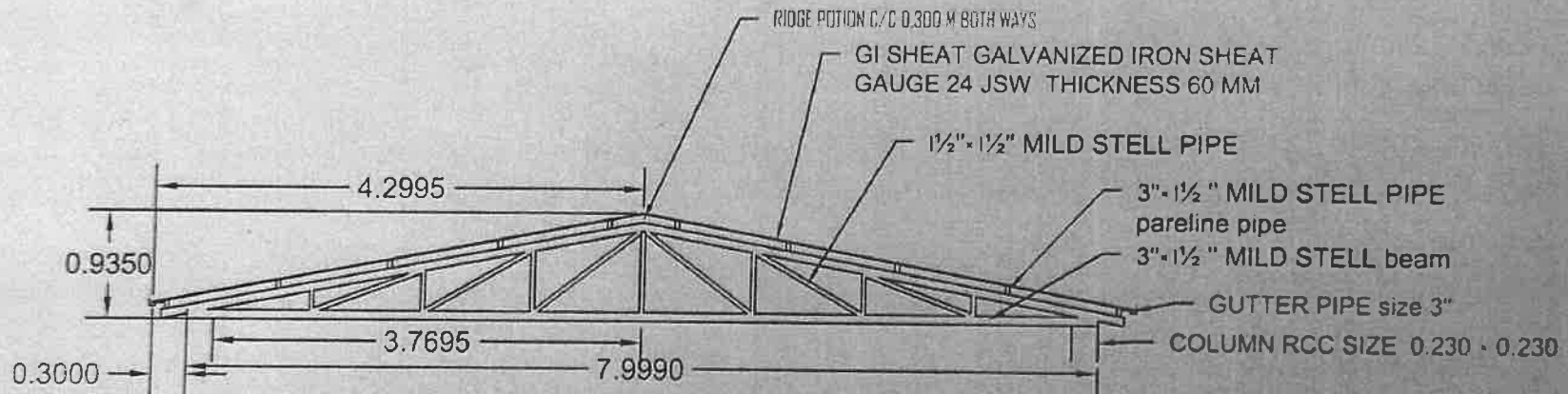
ROOF PLAN FABRICATION WORK USING GI SHEET



For DBEPAM RURAL DEVELOPMENT
CHARITABLE TRUST

R. S.
Project Engineer

A TYPE TRUSS SECTION 1



DINING HALL ROOF DETAILS CHINAELASKIRI			
SL NO	DESCRIPTION	SIZE OF USING STEEL PIPE	NO OF COLUMN
1	A TYPE BEAM	3" - 1.5" STEEL PIPE	5
2	SUPPORT PIPE VERTICAL	3"	4
3	PURLIN PIPE	3" - 1.5"	--
4	GI SHEET	1 mtr	1
5	GUTTER PIPE	3"	1

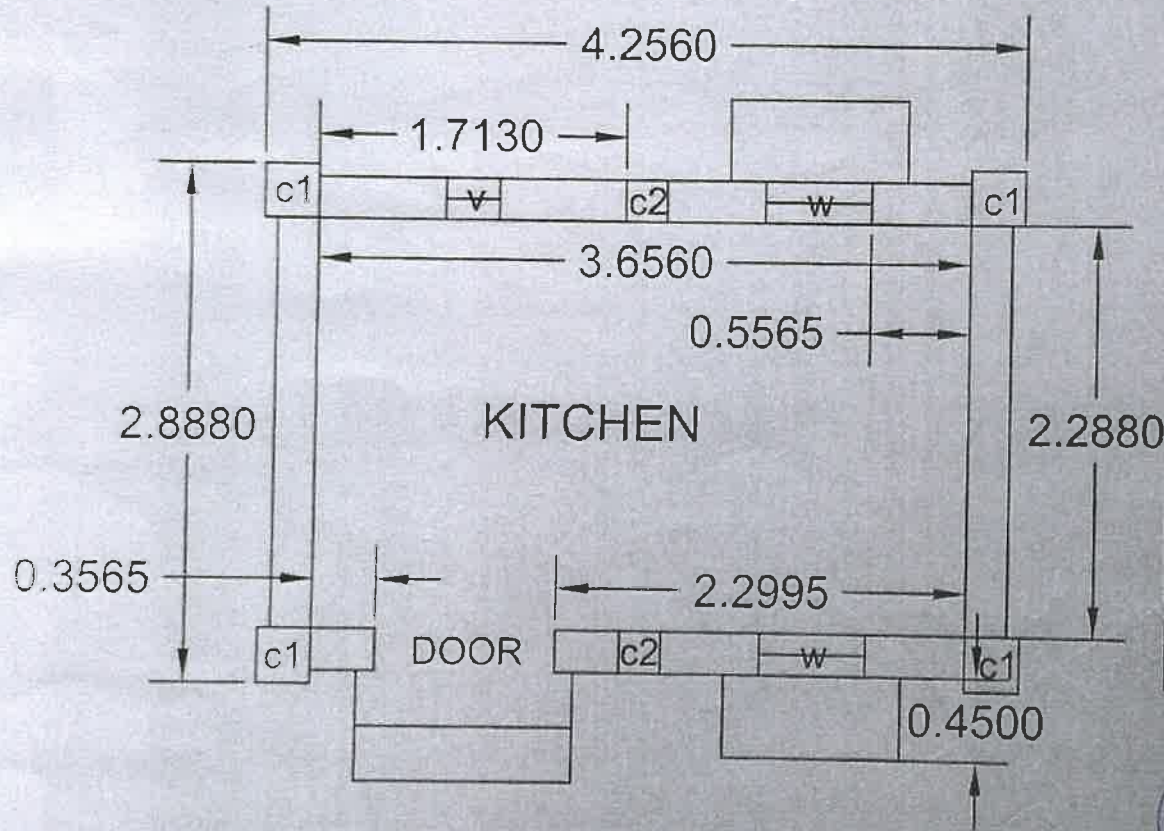
For DEEPAM RURAL DEVELOPMENT
CHARITABLE TRUST

Rohit

Project Engineer

CHINNA ELASAGIRI KITCHEN

No: 38



NOTE

- ALL DIMENTION ARE IN METAR
- DOOR SIZE = L - 1.000 H - 2.190 = 1 NO USING STEEL DOOR
- COLUM SIZE = L - 0.230 * B - 0.230 = 2 NOS
- COLUMN SIZE = L - 0.300 * B - 0.300 = 4 NOS
- SUNSHADE SIZE = L - 1000 * PROJECTION B - 0.450 = 2 NOS
- STEPS SIZE = L - 1.2 * B - 0.300 * H - 0.150 = 2 NOS
- CUT LINTEL SIZE = L - 1.400 * B - 0.230 * H - 0.200
- WINDOW SIZE = L - 0.600 * H - 1.200 USING STEEL WINDOW
- WALL THICKNESS = 0.230

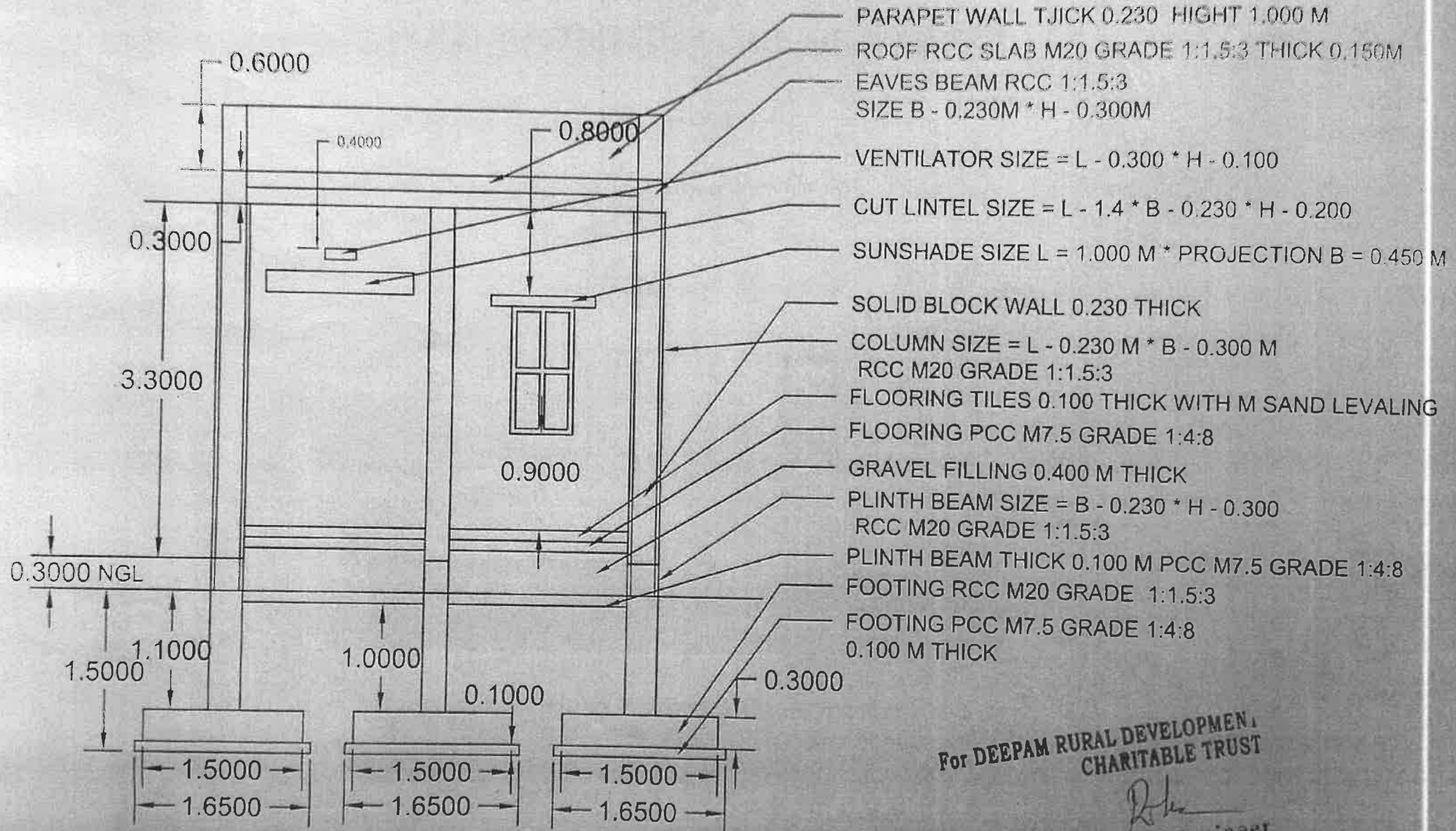
(Signature)
 Civil Engineer,
 Samagra Shiksha,
 State Project Directorate,
 DPI Campus, Nungambakkam,
 Chennai - 600 006.

(Signature)
 State Civil Consultant,
 Samagra Shiksha,
 State Project Directorate,
 DPI Campus, Nungambakkam,
 Chennai - 600 006

For DEEPAM RURAL DEVELOPMENT
 CHARITABLE TRUST

(Signature)
 Project Engineer

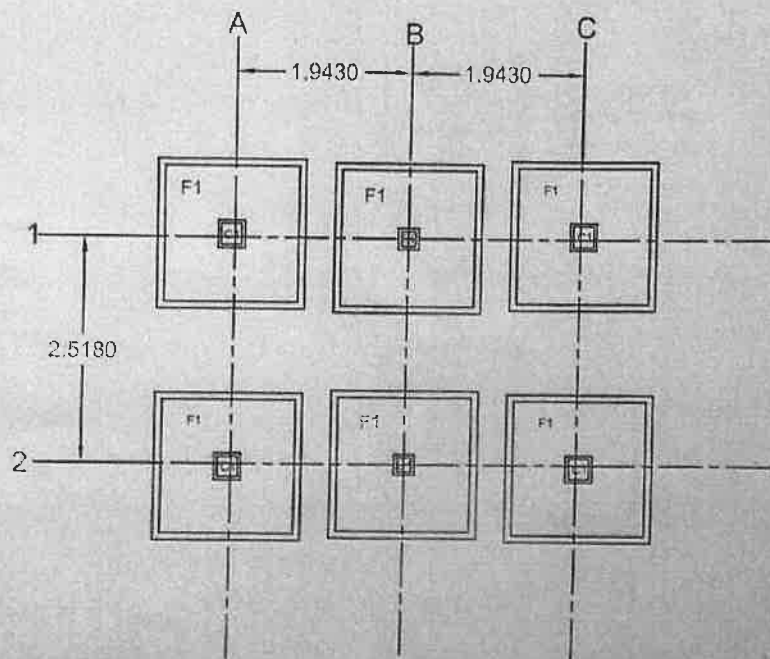
CHINNA ELASAGIRI KITCHEN



For DEEPAM RURAL DEVELOPMENT,
CHARITABLE TRUST

[Signature]
Project Engineer

FOOTING CENTER LINE DRAWINGS



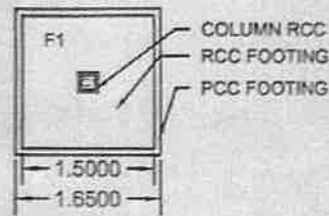
KITCHAN FOOTING DETAILS					
SL NO	FOOTING NO	FOOTING SIZE	TOP REINFORCEMENT	BOTTOM REINFORCEMENT	NO OF FOOTINGS
1	F1	1.5 X 1.5 X 0.3	2- Y12 @200 c/c	2- Y12 @200 c/c	6

KITCHAN COLUMN DETAILS					
SL NO	COLUMN NO	COLUMN SIZE	MAIN BAR	STIRUPS REINFORCEMENT DETAILS	NO OF COLUMN
1	C1	0.300 X 0.300	4- Y12	Y8 @ 150 C/C	4
2	C2	0.230 X 0.230	4- Y12	Y8 @ 150 C/C	2

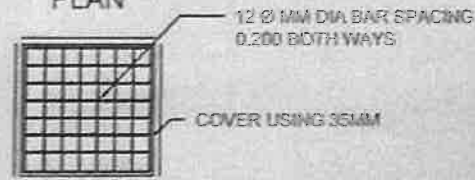
For DEEPAM RURAL DEVELOPMENT CHARITABLE TRUST

[Signature]
Project Engineer

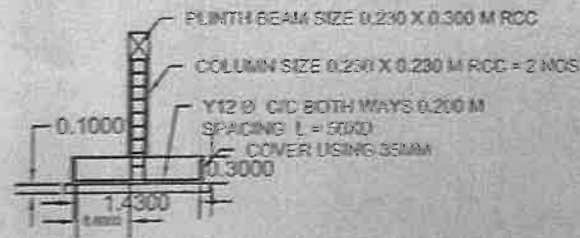
FOOTING DETAILS



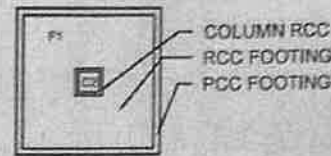
PLAN



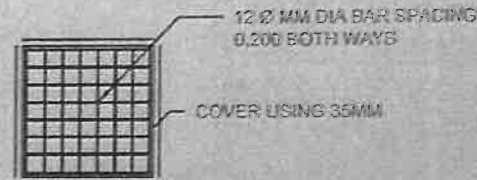
SECTION 1.2 FOOTING MAT



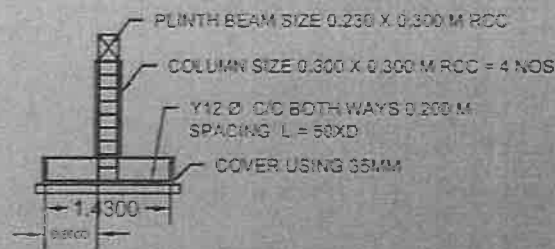
SECTION 1.1



PLAN

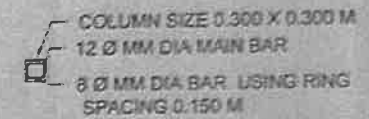
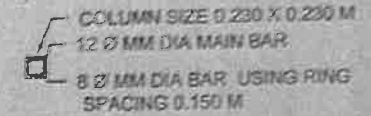


SECTION 1.2 FOOTING MAT

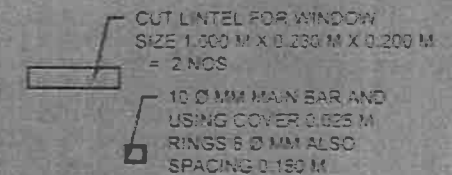
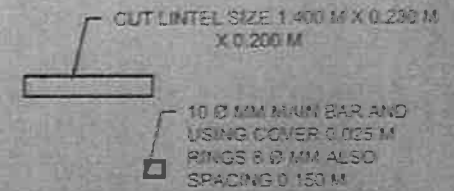


SECTION 1.1

COLUMN DETAILS



CUT LINTEL DETAILS



USING SILL CONCRETE ALSO
8 Ø MM MAIN BAR SPACING 0.150 M

For DEEPAK RURAL DEVELOPMENT
CHARITABLE TRUST

Rohit
Project Engineer