

Measurements Begapalli P.U.M. School Toilet and Urinals										
Sl.No	Name Of Materials	L	B	D	TOT	Qty	Tot Qty	UoM	Rate	Amount
Toilet and Urinal										
1	Earthwork Excavation for footing	2	2	1.5	6	6	36	Cum		
2	Footing PCC 1:4:8	1.65	1.65	0.1	0.2723	6	1.6335	Cum		
3	Footing Reinforcement Details 12MM Main Bar 200 Spacing both way	1.89				86	144.48	KG		
	Reinforcement for Column main bar 10mm 40xd used for vertical potion cover 0.035mm COLUMN SIZE 0.230 X 0.400 6 column	4.81				36	153.92	kg		
	Column Rings using 8 mm dia bar spacing is 0.150	1.124				173	76.82	kg		
4	Footing RCC 1:1.5:3	1.5	1.5	0.3	0.675	6	4.05	Cum		
5	Column RCC 1:1.5:3	0.23	0.4	0.87	0.08	6	0.48024	Cum		
6	Soil back Filling	1	1	1.4	1.4	6	8.4	Cum		
7	Plinth Beam Excavation	21.96	0.68	0.4	5.9739	1	5.973936	Cum		
8	Plinth Beam PCC 1:4:8	21.96	0.38	0.1	0.8346	1	0.834594	Cum		
	Plinth Beam reinforcement details 12 mm main bar Beam Size 0.230 X 0.300	28.52				4	101.3867	kg		
	Plinth beam ring using 8 mm dia bar 150 spacing	0.924				183	66.80178	kg		
9	Plinth Beam RCC 1:1.5:3	25.98	0.23	0.3	1.7923	1	1.792275	Cum		
10	Column RCC 1:1.5:3	0.23	0.4	3	0.276	6	1.656	Cum		
11	Solid Brick Work 0.200 thick	17.59		3	52.761	1	52.761	Sqmt		
	Ventilator size = 0.450 x 0.3 m = 8 nos	0.45		0.3	0.135	8	1.08	Sqmt		
	Total sqmt of solid block	41.06	0.2		8.2119	1	8.2119	Cum		
12	Brick Work for Partition wall toilet thick 0.150 m	3.292		3	9.876	1	9.876	Sqmt		
	Brick Work for Partition wall urinal thick 0.125 m with plasteing and wall till also included	10.3	0.75	1.5	15.45	1	15.45			
	Eaves Beam reinforcement details 12 mm main bar Beam Size 0.200 X 0.150	28.52				4	101.3867	kg		
	Eaves beam ring using 8 mm dia bar 0.150 spacing	0.924				183	66.80178	kg		
13	Roff 10 MM Dia bar bottom bar 150 Spacing	3.704			0	25	57.16049	KG		
	Roof 8 MM Dia Bar top bar 150 Spacing	7.123				47	132.2592	KG		
	Sill mate	20.18				2	15.94311	kg		
	Sill mate concrete	21.06	0.23	0.05	0.2422	1	0.242213	cum		
	Shutering	7.193	3.78		27.182	1	27.18235	Sqmt		
14	Roof Concrete	6.733	3.32	0.15	3.352	1	3.352024	Sqmt		
15	DPC coat	6.733	3.32		22.347	1	22.34683	Sqmt		
	Weathering Corser	6.733	3.32		22.347	1	22.34683	Sqmt		
17	Gravel Filling	6.733	3.32	0.35	7.8214	1	7.821389	Cum		
18	Flooring PCC 1:4:8	6.733	3.32	0.1	2.2347	1	2.234683	Cum		
21	Urinal Platform	10.89	0.5	0.15	0.8166	1	0.8166	Cum		
22	Plastering wall a) Outer Tk 20mm	21.94		3.37	73.951	1	73.95128	Sqmt		
	Door Size 1 X 2.13 Deduction	1		2.13	2.13	2	4.26	Sqmt		
	Total Outer Side Plastering						69.69128	Sqmt		
23	b) Inner wall	19.07		2.82	53.763	1	53.7633	Sqmt		
25	d) Ceiling Tk 12mm	6.733	3.32	0.012	22.347	1	22.34683	Sqmt		
26	Partition wall	20.15		1.8	36.268	1	36.2682	Sqmt		
27	M-Sand Leveling	6.733	3.32	0.025	0.5587	1	0.558671	Cum		
28	Tiles a) Floor	6.933	3.52		24.397	1	24.39723	Sqmt		
29	b) Walls	13.54	6.64	1.5	20.304	1	20.304	Sqmt		
30	Wash Basin					2	2	Nos.		
31	IWC Oriya pan					2	2	Nos.		
32	European Water Closet					2	2	Nos.		
33	Urinal Basin for womens					13	13	Nos.		
34	Pipe Line for Bathroom urinal Basin 1" PVC Pipe	300			300	1	300	RM		
35	Pipe Line Bathroom 3" PVC Pipe	100			100	1	100	RM		

Measurements Begapalli P.U.M. School Toilet and Urinals										
Sl.No	Name Of Materials	L	B	D	TOT	Qty	Tot Qty	UoM	Rate	Amount
	Water Tabs	5				15	15	Nos.		
36	Doors 5 Nos inner door plastic	0.761		2.133	1.6232	5	8.116065	Sqmt		
	Door 1 Nos. main door steel	1		2.133	2.133	1	2.133	Sqmt		
37	Steps Brick work	1.2	0.3	0.15	0.054	4	0.216	CUM		
38	Plastering- Steps	1.5		0.3	0.45	4	1.8	Sqmt		
39	Vetilation	0.45	0.3		0.135	13	13	Nos.		
40	Earth Exavation for Leach pit	1	1	1	1	4	4	cum		
41	Sock pit 2 nos	1	1	1	1	4	4	Cum		
42	Sanitary Pad Incinerator 1No	LS	LS	LS	LS	1	1	Nos.		
43	Drainage pipe for 0.3mdia	7.5			7.5	2	15	Rm		
44	Parapet wall	16.27	0.2	0.45	1.4639	1	1.46394	Cum		
45	Plastering Outer	17.07		0.65	11.093	1	11.0929	Sqmt		
	Inner	16.27		0.45	7.3197	1	7.3197	Sqmt		
46	Painting 1cote white & 1 cote Emulson	As Per Platering area			164.21	1	164.214	Sqmt		
47	Enamel Paint 2 side x 7Nos	As per Door Details			2.133	1	2.133	Sqmt		
48	500 litter tank + Plumbing , Soak pit,1/2 hp motor fixing and Nopkin Insulator					LS		LS		

Estimate Begapalli P.U.M. School Toilet and Urinals

Sl.No	Description Of Work	Qty	UoM	Amount	Total Amount
I	Toilet and Urinal				
1	Earthwork Excavation for footing	36.000	Cum		
2	Footing PCC 1:4:8	1.635	Cum		
3	Footing RCC 1:1.5:3	4.050	Cum		
4	Column RCC 1:1.5:3	0.480	Cum		
5	Soil back Filling	8.400	Cum		
6	Plinth Beam Excavation	1.490	Cum		
7	Plinth Beam PCC 1:4:8	0.834	Cum		
8	Plinth Beam RCC 1:1.5:3	1.792	Cum		
9	Column RCC 1:1.5:3	1.656	Cum		
10	Solid Brick Work Tk6" with 2 door Deduction	8.211	Cum		
12	Brick Work for Partition wall toilet with 2 door Deduction	25.326	Sqmt		
13	Eves Beam RCC 1:1.5:3	1.792	Cum		
14	Slap Concreate RCC 1:1.5:3	3.352	Cum		
15	Gravel filling	7.350	Cum		
16	Flooring PCC 1:4:8	2.234	Cum		
14	Urinal Platform PCC 1:3:8	1.633	Cum		
18	Plastering wall Outer, Inner, Centre wall & C	182.060	Sqmt		
19	M-Sand Levelling	0.558	Cum		
20	Tiles a) Floor	35.280	Sqmt		
	b) Walls	30.240	Sqmt		
21	Wash Basin	2.000	Nos.		
22	IWC Oriya pan	2.000	Nos.		
23	European Water Closet	2.000	Nos.		
24	Doors 5 Nos PVC	8.116	Sqmt		
25	Door 1 Nos. main door steel	2.133	Sqmt		
26	Ventilation	13.000	Nos.		
27	Sock pit 2 nos	2.000	Cum		
27	Painting 1cote white & 1 cote Emulsion	164.214	Sqmt		
28	Enamel Paint 2 side	2.133	Sqmt		
29	500 litre tank + Plumbing , Soak pit,1/2 hp motor fixing		LS		
30	Sundry		LS		
	Total A				0.00

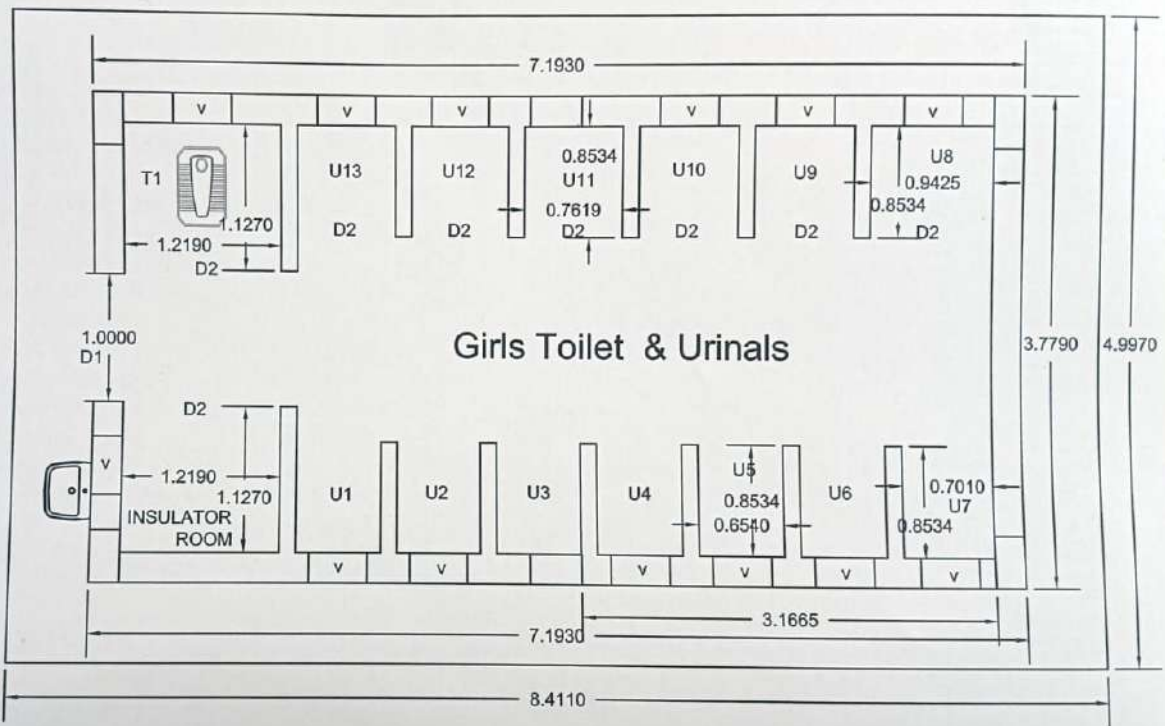
BAGAPALLI P.U.P SCHOLL

NOTE

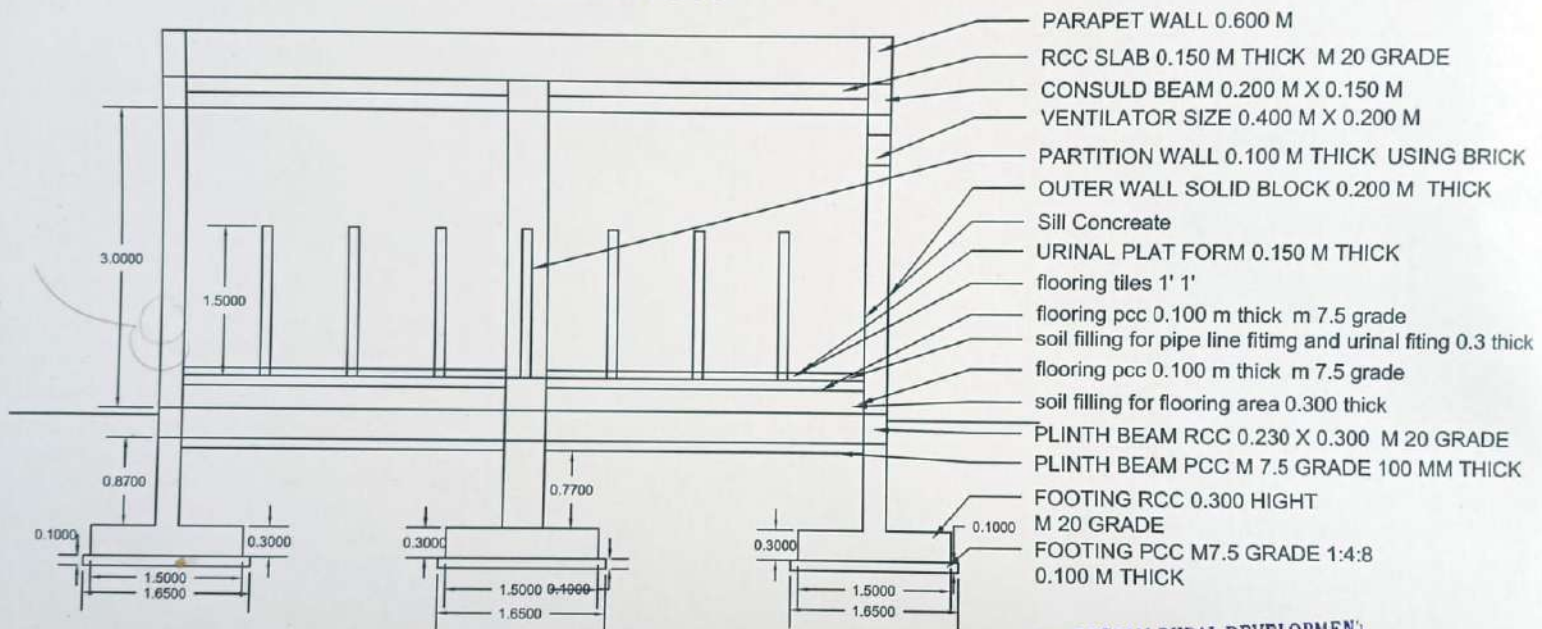
ALL DIMENTION ARE IN METAR
 DOOR D1 SIZE = L = 1.000 H = 2.19, = 1 NOS
 DOOR D2 SIZE = 8 NOS = L = 0.761 H = 2.19
 COLUM SIZE = L - 0.230 * B - 0.400 = 6 NOS
 GIRLS URINALS = 13 NOS
 STEPS SIZE = L - 1.2 * B - 0.3 * H - 0.15 = 4 NOS
 NO OF VENTILATOR = 13 NOS
 COLUMN AND Beam FOOTING CLEAR COVER 35 MM
 WASH BASON = 1 NOS
 WALL THICKNESS = 0.230

For DEEPAM RURAL DEVELOPMENT
 CHARITABLE TRUST

Rb
 Project Engineer



SECTION

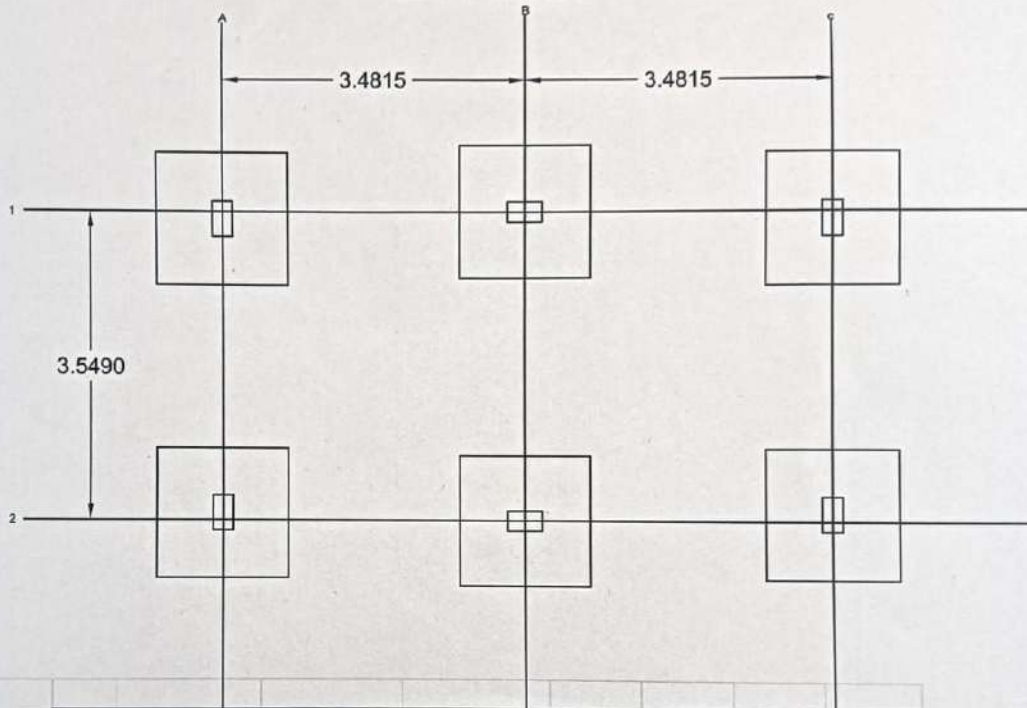


- PARAPET WALL 0.600 M
- RCC SLAB 0.150 M THICK M 20 GRADE
- CONSULD BEAM 0.200 M X 0.150 M
- VENTILATOR SIZE 0.400 M X 0.200 M
- PARTITION WALL 0.100 M THICK USING BRICK
- OUTER WALL SOLID BLOCK 0.200 M THICK
- Sill Concrete
- URINAL PLAT FORM 0.150 M THICK
- flooring tiles 1' 1'
- flooring pcc 0.100 m thick m 7.5 grade
- soil filling for pipe line fitting and urinal fitting 0.3 thick
- flooring pcc 0.100 m thick m 7.5 grade
- soil filling for flooring area 0.300 thick
- PLINTH BEAM RCC 0.230 X 0.300 M 20 GRADE
- PLINTH BEAM PCC M 7.5 GRADE 100 MM THICK
- FOOTING RCC 0.300 HIGHT M 20 GRADE
- FOOTING PCC M7.5 GRADE 1:4:8 0.100 M THICK

For DEEPAM RURAL DEVELOPMENT CHARITABLE TRUST

Rub
Project Engineer

FOOTING CENTER LINE DRAWING



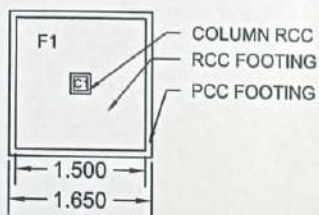
TOILET COLUMN DETAILS					
SL NO	COLUMN NO	COLUMN SIZE	MAIN BAR	STIRUPS	NO
1	C1	0.230 X 0.400	6-Y12	Y8 @150 C/ C	6

TOILET FOOTING DETAILS					
SL NO	FOOTING NO	FOOTING SIZE	TOP REINFORCEMENT	BOTTOM REINFORCEMENT	NO OF FOOTING
1	F1	1.5 X 1.5 X 0.3	Y12 @ 200 c/c	Y12 @ 200	6

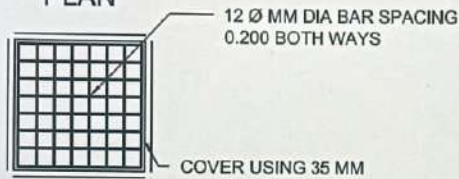
For DEEPAM RURAL DEVR
 CHARITABLE TRUST

 Project Engineer

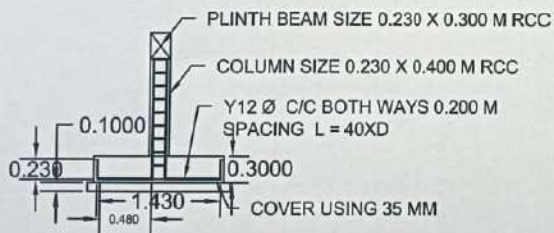
FOOTING DETAILS



PLAN

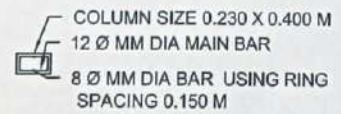


SECTION 1.2 FOOTING MAT

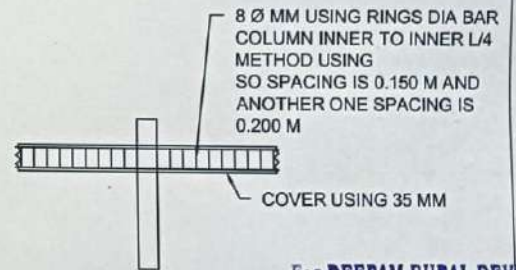
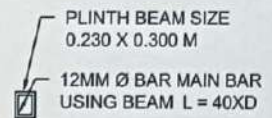


SECTION 1.1

COLUMN DETAILS



PLINTH BEAM DETAILS



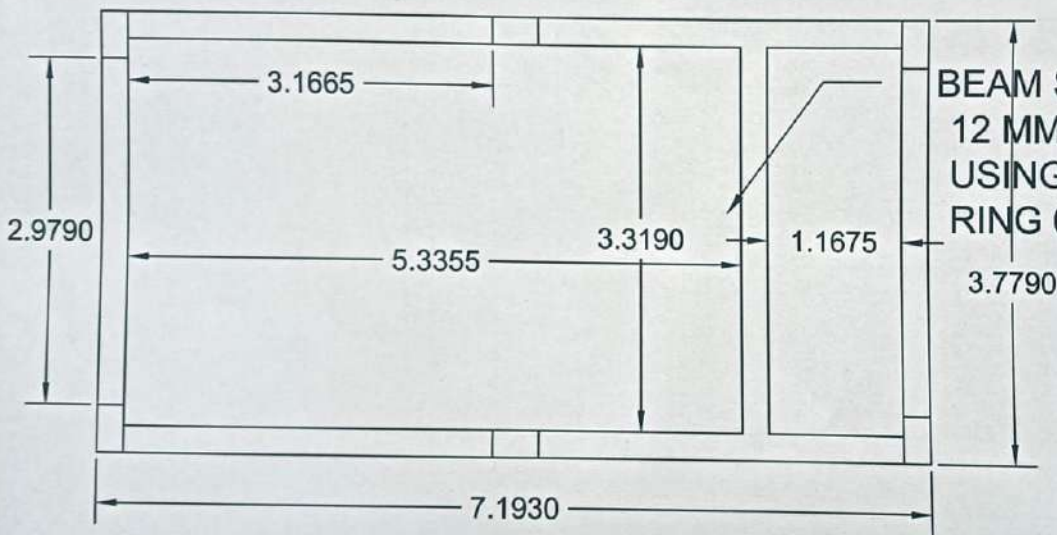
PLINTH BEAM SECTION 1.1

Sill concrete Reinforcement Detail 8 mm Dia Bar

For DEEPAM RURAL DEVELOPMENT CHARITABLE TRUST

Project Engineer

PLINTH BEAM CENTER LINE DRAWING

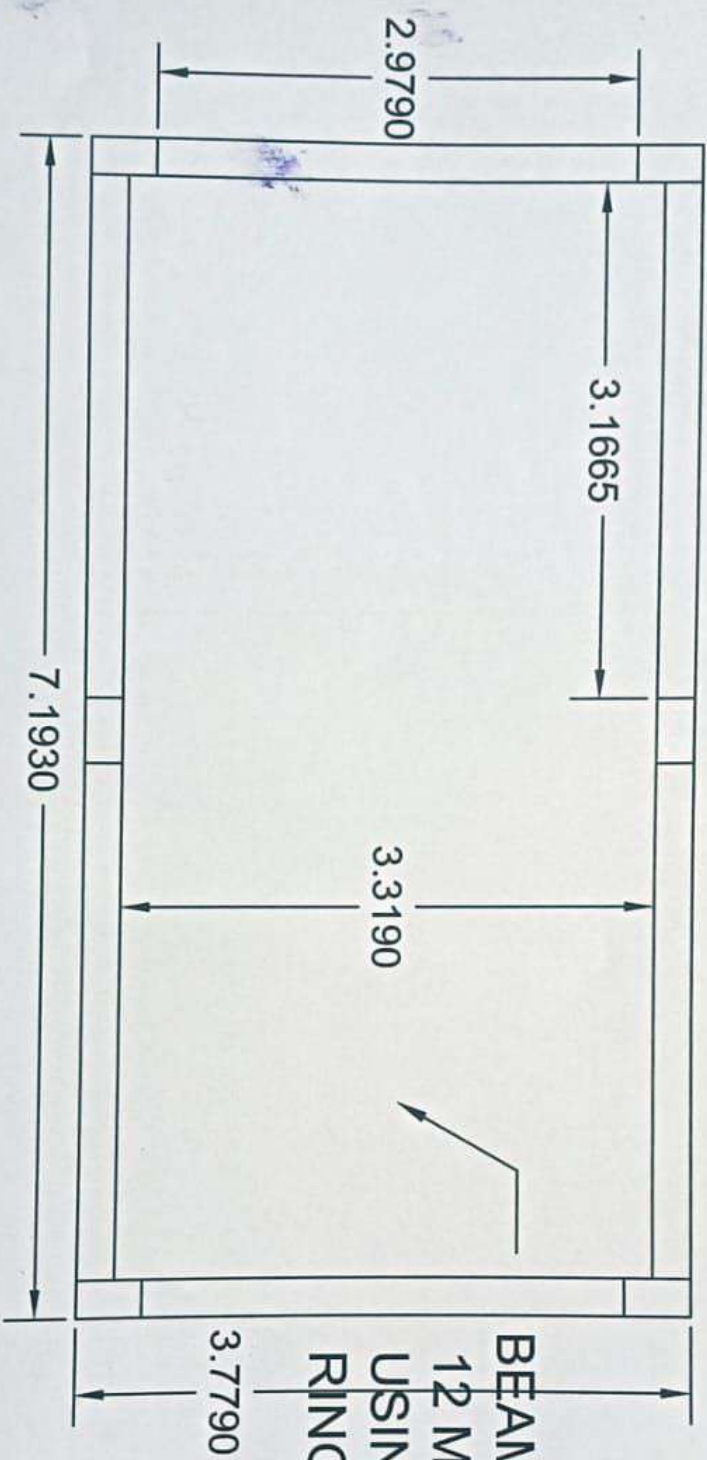


BEAM SIZE 0.230 X 0.300 M USING
12 MM DIA BAR MAIN BAR RING
USING 8 MM DIA BAR
RING 0.150 SPACING

For DEEPAM RURAL DEVELOPMENT
CHARITABLE TRUST

R. S.
Project Engineer

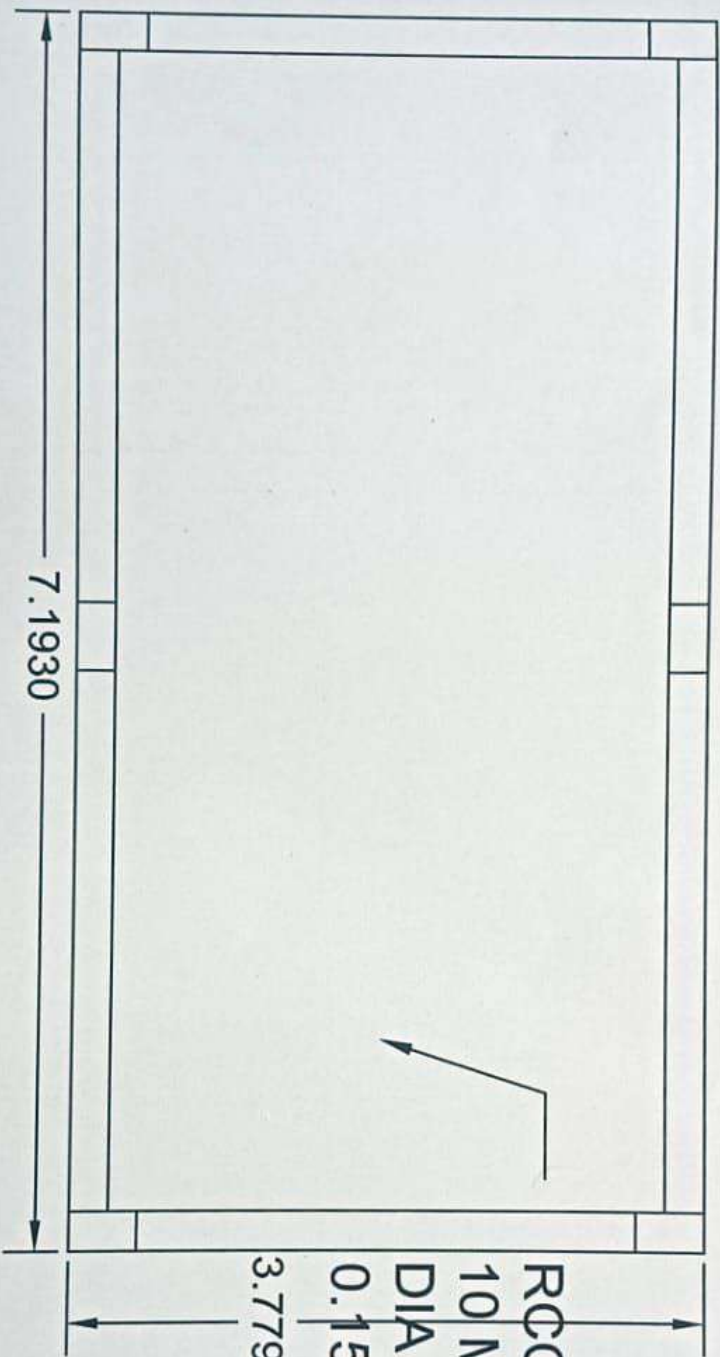
EAVES BEAM CENTER LINE DRAWING



BEAM SIZE 0.230 X 0.300 M USING
12 MM DIA BAR MAIN BAR RING
USING 8 MM DIA BAR
RING 0.150 SPACING

For DEEPAM RURAL
CHARITABLE
PKL
Project Engineer

RCC SLAB CONCRATE



RCC SLAB 0.150 THICK
10 MM DIA BAR AND 8 MM
DIA BAR USING REINFORCEMENT
0.150 SPACING BOTH WAYS

3.7790

7.1930

For DEEPAM RURAL DEVELOPMENT,
CHARITABLE TRUST


Project Engineer